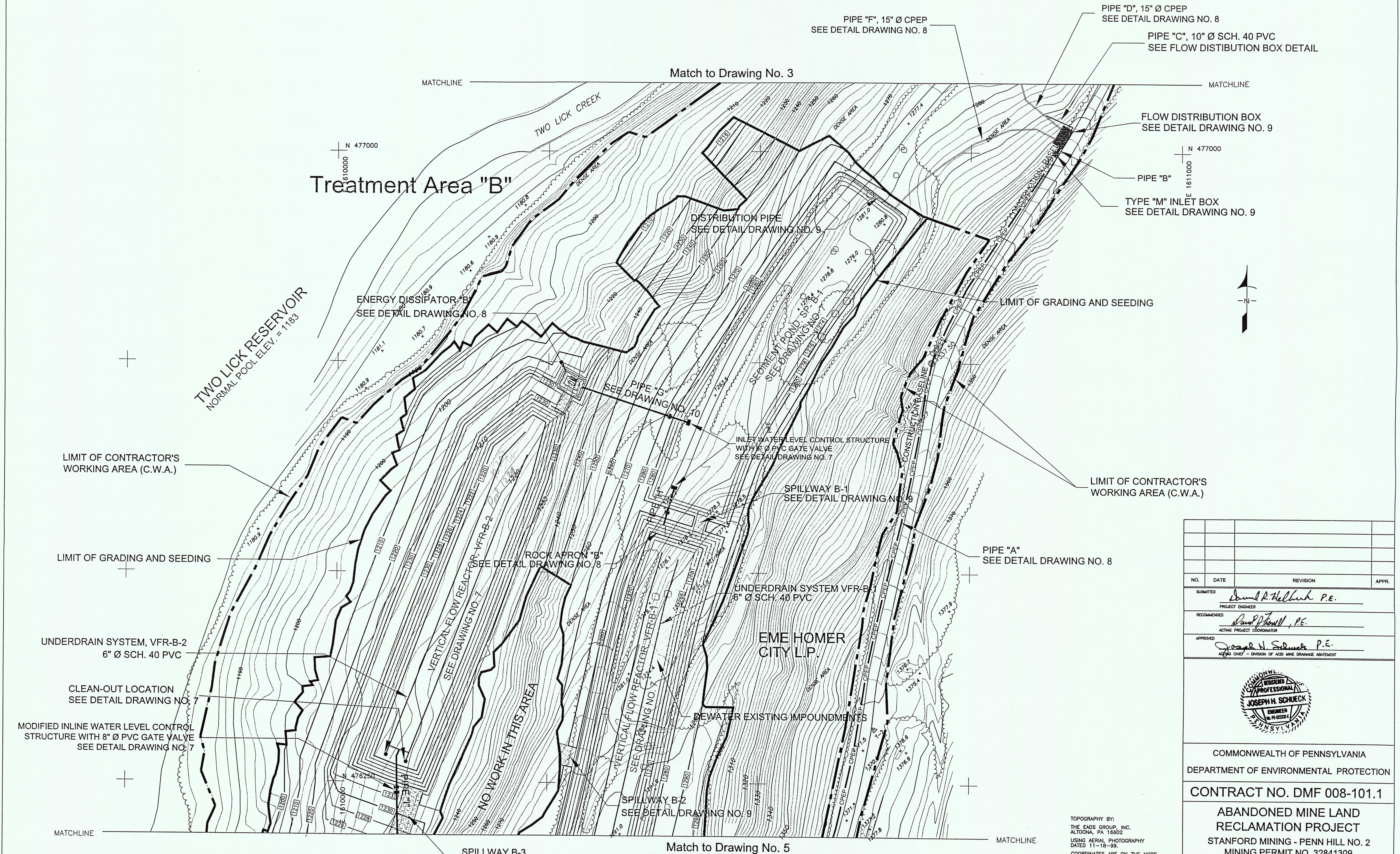


# Treatment Area "B"

TWO LICK RESERVOIR  
NORMAL POOL ELEV. = 1183

EME HOMER CITY L.P.



PIPE "F", 15" Ø CPEP  
SEE DETAIL DRAWING NO. 8

PIPE "D", 15" Ø CPEP  
SEE DETAIL DRAWING NO. 8

PIPE "C", 10" Ø SCH. 40 PVC  
SEE FLOW DISTRIBUTION BOX DETAIL

FLOW DISTRIBUTION BOX  
SEE DETAIL DRAWING NO. 9

PIPE "B"

TYPE "M" INLET BOX  
SEE DETAIL DRAWING NO. 9

ENERGY DISSIPATOR "B"  
SEE DETAIL DRAWING NO. 8

DISTRIBUTION PIPE  
SEE DETAIL DRAWING NO. 9

PIPE "G"  
SEE DETAIL DRAWING NO. 10

INLET WATER LEVEL CONTROL STRUCTURE  
WITH 8" Ø PVC GATE VALVE  
SEE DETAIL DRAWING NO. 7

SPILLWAY B-1  
SEE DETAIL DRAWING NO. 9

PIPE "A"  
SEE DETAIL DRAWING NO. 8

ROCK APRON "B"  
SEE DETAIL DRAWING NO. 8

UNDERDRAIN SYSTEM VFR-B  
6" Ø SCH. 40 PVC

VERTICAL FLOW REACTOR VFR-B-2  
SEE DETAIL DRAWING NO. 7

VERTICAL FLOW REACTOR VFR-B-1  
SEE DETAIL DRAWING NO. 7

SPILLWAY B-2  
SEE DETAIL DRAWING NO. 9

SPILLWAY B-3  
SEE DETAIL DRAWING NO. 9

LIMIT OF CONTRACTOR'S WORKING AREA (C.W.A.)

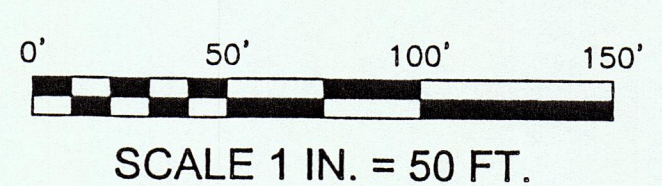
LIMIT OF GRADING AND SEEDING

UNDERDRAIN SYSTEM, VFR-B-2  
6" Ø SCH. 40 PVC

CLEAN-OUT LOCATION  
SEE DETAIL DRAWING NO. 7

MODIFIED INLINE WATER LEVEL CONTROL  
STRUCTURE WITH 8" Ø PVC GATE VALVE  
SEE DETAIL DRAWING NO. 7

NO WORK IN THIS AREA



TOPOGRAPHY BY:  
THE EADS GROUP, INC.  
ALTOONA, PA 16602  
USING AERIAL PHOTOGRAPHY  
DATED 11-18-99.  
COORDINATES ARE ON THE NGRS  
DATA BASE, NAD83, PA SPC  
SOUTH ZONE.  
ALL ELEVATIONS SHOWN ARE BASED  
ON NAVD83 DATUM  
RELATIVE ERROR OF CLOSURE FOR  
TRAVERSE:  
TRANSVERSE ADJUSTMENT BY LEAST  
SQUARES METHOD.  
ALL DIMENSIONS AND EXISTING  
CONDITIONS SHALL BE CHECKED  
AND VERIFIED BY CONTRACTOR  
AT THE SITE.

NO.	DATE	REVISION	APPR.
SUBMITTED			
PROJECT ENGINEER	<i>David P. Hellock, P.E.</i>		
RECOMMENDED			
ACTING PROJECT COORDINATOR	<i>David P. Hellock, P.E.</i>		
APPROVED			
ACTING CHIEF - DIVISION OF ACID MINE DRAINAGE ABATEMENT	<i>Joseph H. Schueck, P.E.</i>		



COMMONWEALTH OF PENNSYLVANIA  
DEPARTMENT OF ENVIRONMENTAL PROTECTION  
CONTRACT NO. DMF 008-101.1  
ABANDONED MINE LAND  
RECLAMATION PROJECT  
STANFORD MINING - PENN HILL NO. 2  
MINING PERMIT NO. 32841309  
CHERRYHILL TOWNSHIP INDIANA COUNTY

## PLAN

DRAWN BY	DRH	DATE	11/16/00	DRAWING NO.	4 of 11
CHECKED BY	<i>DRH</i>	SCALE	AS SHOWN		