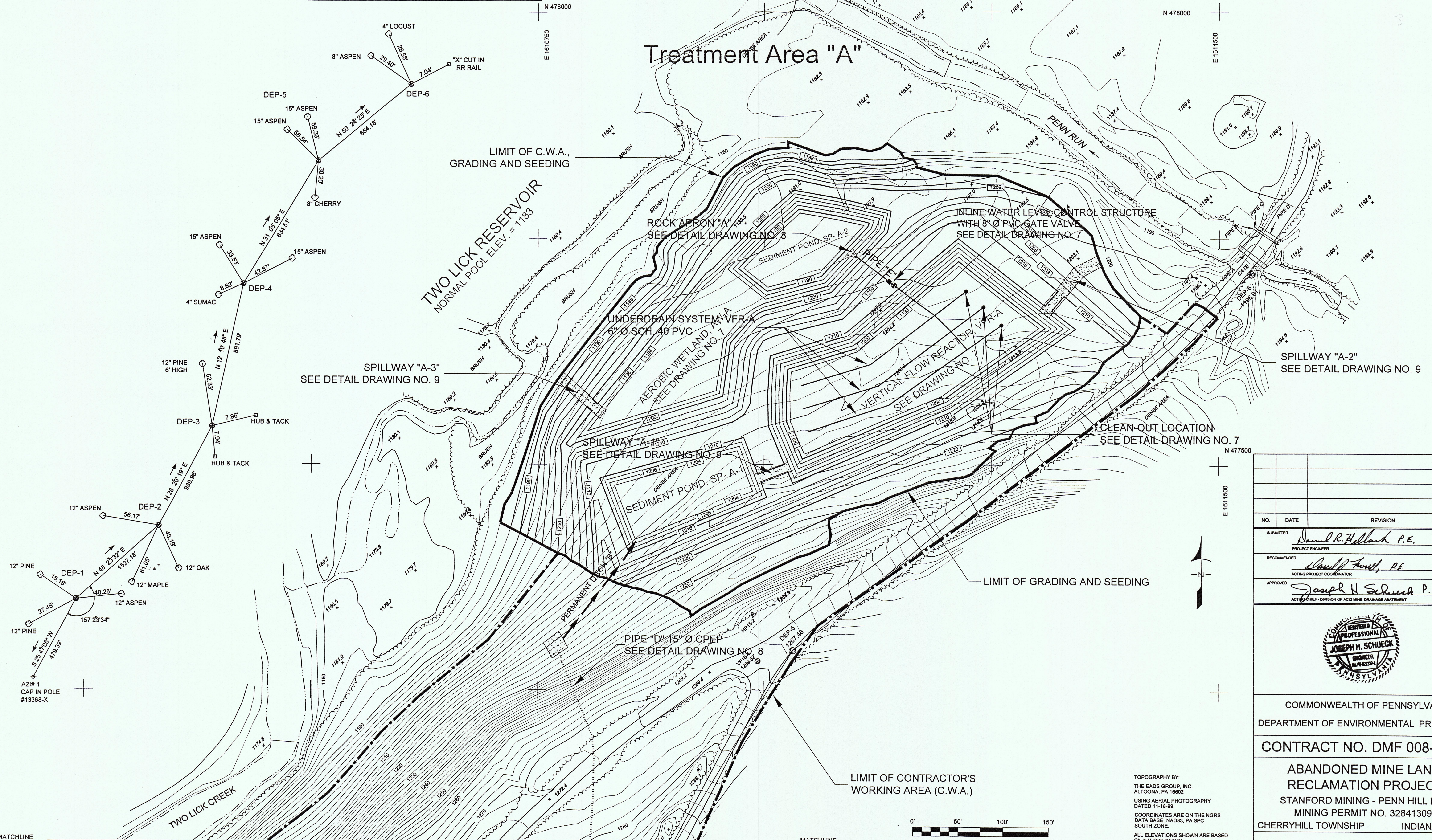


BENCH MARK DATA					
BM NO.	BASELINE STA.	ELEVATION	DESCRIPTION	N. COORDINATE	E. COORDINATE
DEP-1	0+00.00	1392.70	5/8" REBAR WITH CAP	473993.69	1608904.04
DEP-2	15+27.18	1369.33	5/8" REBAR WITH CAP	475007.78	1610045.93
DEP-3	25+17.14	1368.02	5/8" REBAR WITH CAP	475879.10	1610515.84
DEP-4	34+08.93	1337.50	5/8" REBAR WITH CAP	476750.81	1610704.00
DEP-5	40+43.44	1267.48	5/8" REBAR WITH CAP	477294.21	1611031.60
DEP-6	46+97.62	1196.91	5/8" REBAR WITH CAP	477711.14	1611535.70

CONSTRUCTION BASELINE DATA

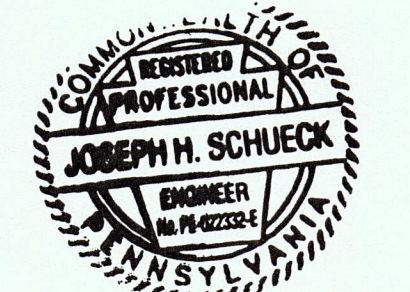


NO.	DATE	REVISION	APPR.

SUBMITTED: *David R. Hollank P.E.*
PROJECT ENGINEER

RECOMMENDED: *Joseph H. Schueck P.E.*
ACTING PROJECT COORDINATOR

APPROVED: *Joseph H. Schueck P.E.*
ACTING CHIEF - DIVISION OF ACID MINE DRAINAGE TREATMENT



COMMONWEALTH OF PENNSYLVANIA
DEPARTMENT OF ENVIRONMENTAL PROTECTION

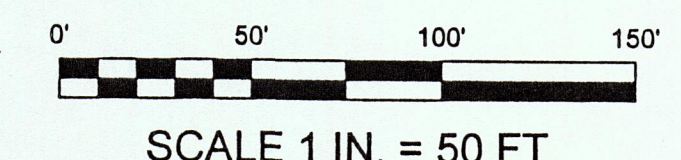
CONTRACT NO. DMF 008-101.1

ABANDONED MINE LAND
RECLAMATION PROJECT
STANFORD MINING - PENN HILL NO. 2
MINING PERMIT NO. 32841309
CHERRYHILL TOWNSHIP INDIANA COUNTY

PLAN

DRAWN BY	DRH	DATE	11/16/00	DRAWING NO.	3 of 11
CHECKED BY	<i>[Signature]</i>	SCALE	AS SHOWN		

TOPOGRAPHY BY:
THE EADS GROUP, INC.
ALTOONA, PA 16602
USING AERIAL PHOTOGRAPHY
DATED 11-19-99.
COORDINATES ARE ON THE NGRS
DATA BASE, NAD83, PA SPC
SOUTH ZONE.
ALL ELEVATIONS SHOWN ARE BASED
ON NAVD83 DATUM
RELATIVE ERROR OF CLOSURE FOR
TRAVERSE
TRAVERSE ADJUSTMENT BY LEAST
SQUARES METHOD.
ALL DIMENSIONS AND EXISTING
CONDITIONS SHALL BE CHECKED
AND VERIFIED BY CONTRACTOR
AT THE SITE.



Match to Drawing No. 4

MATCHLINE

MATCHLINE