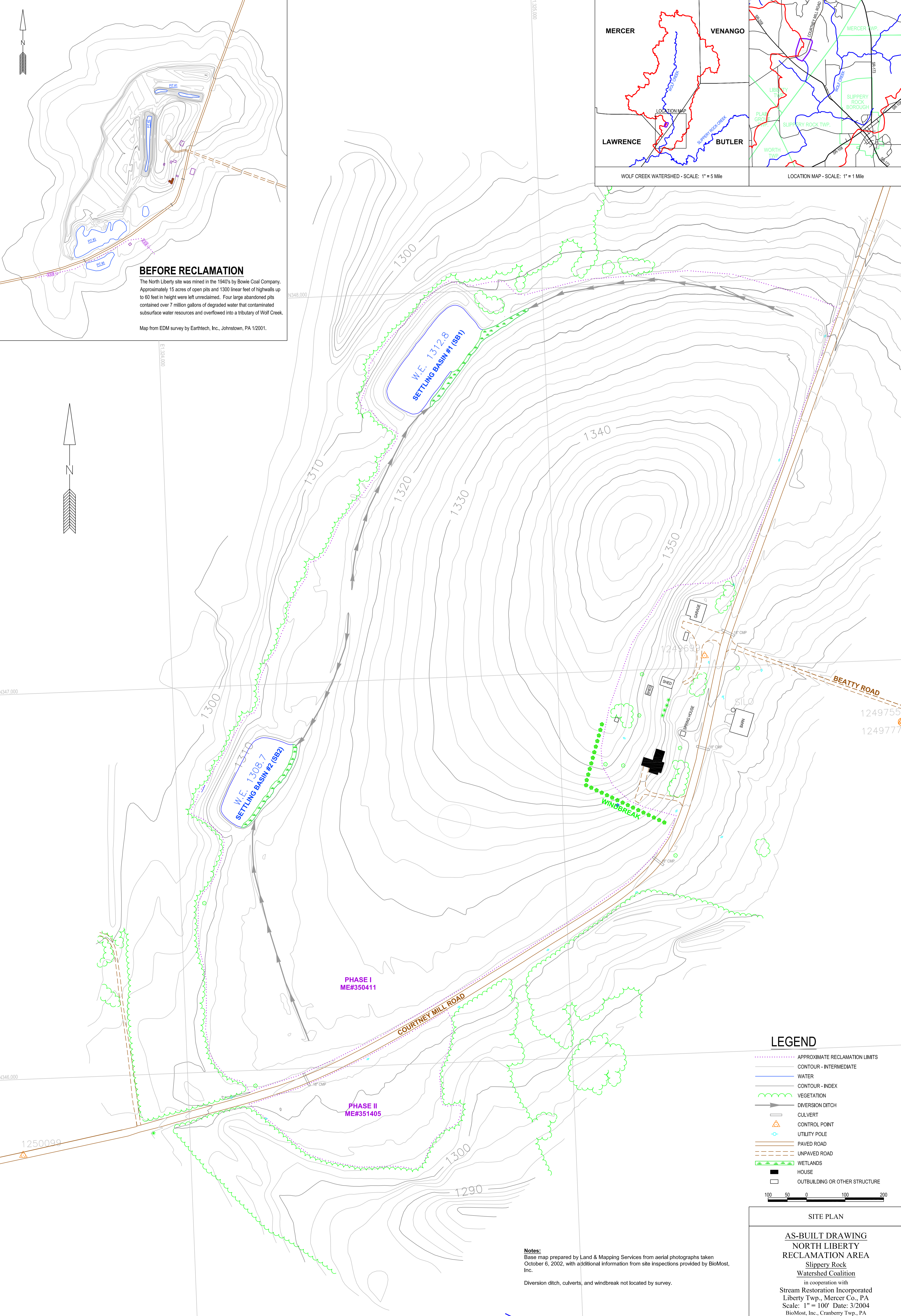
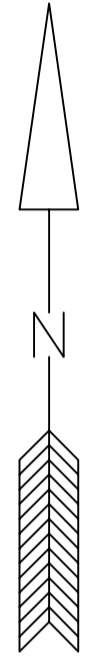


BEFORE RECLAMATION

The North Liberty site was mined in the 1940's by Bowie Coal Company. Approximately 15 acres of open pits and 1300 linear feet of highwalls up to 60 feet in height were left unreclaimed. Four large abandoned pits contained over 7 million gallons of degraded water that contaminated subsurface water resources and overflowed into a tributary of Wolf Creek.

Map from EDM survey by Earthtech, Inc., Johnstown, PA 1/2001.



LEGEND

- APPROXIMATE RECLAMATION LIMITS
- CONTOUR - INTERMEDIATE
- CONTOUR - INDEX
- VEGETATION
- DIVERSION DITCH
- CULVERT
- CONTROL POINT
- UTILITY POLE
- PAVED ROAD
- UNPAVED ROAD
- WETLANDS
- HOUSE
- OUTBUILDING OR OTHER STRUCTURE



SITE PLAN

AS-BUILT DRAWING
NORTH LIBERTY
RECLAMATION AREA
 Slippery Rock
 Watershed Coalition
 in cooperation with
 Stream Restoration Incorporated
 Liberty Twp., Mercer Co., PA
 Scale: 1" = 100' Date: 3/2004
 BioMost, Inc., Cranberry Twp., PA

Notes:
 Base map prepared by Land & Mapping Services from aerial photographs taken October 6, 2002, with additional information from site inspections provided by BioMost, Inc.
 Diversion ditch, culverts, and windbreak not located by survey.