

ABANDONED MINE DRAINAGE REMEDIATION PROJECT FOR THE MARY D BOREHOLE LOCATED IN SCHUYLKILL TOWNSHIP, SCHUYLKILL COUNTY, PA

ACT 187 UNDERGROUND UTILITY PROTECTION ACT

RETIEW ASSOCIATES, INC. HEREBY STATES THAT, PURSUANT TO THE PROVISIONS OF ACT NO. 287 OF 1974, AS AMENDED BY ACT 187 OF 1996, OF THE PENNSYLVANIA LEGISLATURE, IT HAS PERFORMED THE FOLLOWING IN PREPARING THESE DRAWINGS REQUIRING EXCAVATION OR DEMOLITION WORK AT SITES WITH THE UTILITY SUBVISION(S) SHOWN ON THE DRAWINGS:

- PURSUANT TO SECTION 4, CLAUSE (2) OF SAID ACT, RETIEW ASSOCIATES, INC. REQUESTED FROM EACH USER'S OFFICE DESIGNATED ON SUCH LIST PROVIDED BY THE ONE CALL SYSTEM NOTIFICATION, THE INFORMATION PRESCRIBED BY SECTION 2, CLAUSE (4) OF SAID ACT, NOT LESS THAN (10) NOR MORE THAN (90) WORKING DAYS BEFORE FINAL DESIGN IS TO BE COMPLETED.
- PURSUANT TO SECTION 4, CLAUSE (5) OF SAID ACT, RETIEW ASSOCIATES, INC. HAS MET THEIR OBLIGATIONS OF CLAUSE (2) BY CALLING THE ONE CALL SYSTEM SERVING THE LOCATION WHERE EXCAVATION IS TO BE PERFORMED.
- PURSUANT TO SECTION 4, CLAUSE (3) OF SAID ACT, RETIEW ASSOCIATES, INC. HAS SHOWN UPON THESE DRAWINGS THE POSITION AND TYPE OF EACH LINE, AS DERIVED PURSUANT TO THE REQUEST MADE AS REQUIRED BY CLAUSE (2), THE SERIAL NUMBER PROVIDED BY THE ONE CALL SYSTEM, THE TOLL-FREE ONE CALL SYSTEM PHONE NUMBER, AND THE NAME OF THE USER, THE USER'S DESIGNATED OFFICE ADDRESS AND PHONE NUMBER AS SHOWN ON THE LIST REFERRED TO IN SECTION 4, CLAUSE (5) OF SAID ACT.

AND RETIEW ASSOCIATES, INC. DOES NOT MAKE ANY REPRESENTATION, WARRANTY, ASSURANCE OR GUARANTEE THAT THE INFORMATION RECEIVED PURSUANT TO SAID REQUEST AND AS REFLECTED ON THESE DRAWINGS IS CORRECT OR ACCURATE, BUT RETIEW ASSOCIATES, INC. IS REFLECTING SAID INFORMATION ON THESE DRAWINGS ONLY DUE TO THE REQUIREMENTS OF THE SAID ACT NO. 187 OF DECEMBER 19, 1996.

ONE CALL SYSTEM SERIAL NO. NOTIFICATION BY RETIEW ASSOCIATES, INC.
DATE: 06/27/2011

ONE CALL SYSTEM SERIAL NUMBER: 20111782785

PA 1
SYSTEM, INC.
1-800-242-1776

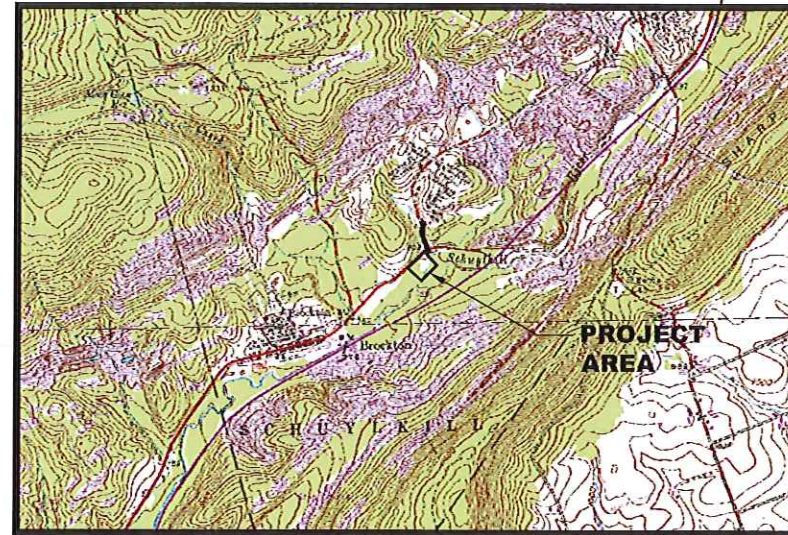
CALL BEFORE YOU DIG!
PENNSYLVANIA LAW REQUIRES
(3) WORKING DAYS NOTICE FOR
CONSTRUCTION PHASES AND (10) WORKING
DAYS IN DESIGN STAGE - STOP CALL.

UTILITIES RESPONDED:

ELYTHE TOWNSHIP MUNICIPAL AUTHORITY 375 VALLEY STREET NEW PHILADELPHIA, PA 17959-1218 CONTACT: MICHAEL E BURDA	SCHUYLKILL VALLEY SEWER AUTHORITY 318 RIDGE RD PO BOX 53 CUMBOIA, PA 17930 CONTACT: DAN LUBINSKY E-MAIL: suzanneopavavage@verizon.net
FRONTIER COMM. OF LAKEWOOD INC. 4 S APPLE ST BARNESVILLE, PA 18214 CONTACT: CHARLES HUBERAK E-MAIL: charles_hubera@ontiercorp.com	SUNOCO PIPELINE LP 525 FRITZTOWN RD SINKING SPRING, PA 19608 CONTACT: ONE CALL DEPARTMENT
METROCAST COMMUNICATIONS 911 N MARKET ST BERKLEY, PA 18603 CONTACT: CINDY REIGEL	VERIZON NORTH 2201 EAST 30TH STREET ERIE, PA 16510 CONTACT: MICHAEL A GEARY EMAIL: michael.geary@verizon.com
PPL ELECTRIC UTILITIES CORPORATION 4810 LYCOMING MALL DR MONTGOMERSVILLE, PA 17754 CONTACT: PAMELA SEITZER E-MAIL: pdseltzer@pplweb.com	VERIZON PENNSYLVANIA INC 15 E MONTGOMERY AVE PITTSBURGH, PA 15212 CONTACT: OFFICE PERSONNEL
	VERIZON PENNSYLVANIA INC 501 TANNALL STREET 2ND FLOOR WILMINGTON, DE 19801 CONTACT: OFFICE PERSONNEL

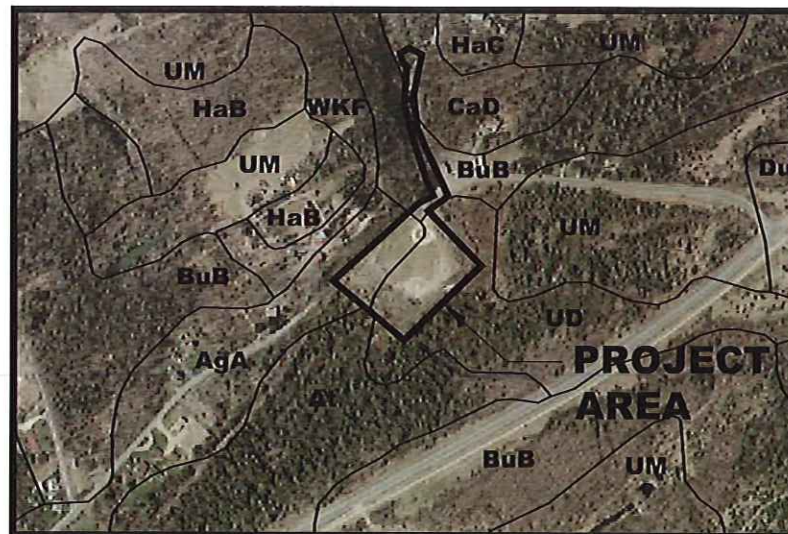
SHEET INDEX

SHT. 1	COVER
SHT. 2	EXISTING PLAN
SHT. 3	PROPOSED PLAN
SHT. 4	PROPOSED INTAKE PLAN AND PROFILE
SHT. 5	E & S PLAN
SHT. 6	E & S PLAN
SHT. 7	TREATMENT CELL PLAN & PROFILE
SHT. 8	DETAILS
SHT. 9	DETAILS
SHT. 10	DETAILS
SHT. 11	E & S NOTES
SHT. 12	E & S DETAILS
SHT. 13	E & S DETAILS



DELANO & ORWIGSBURG, PA USGS QUADS

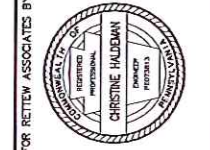
LOCATION MAP
APPROXIMATE SCALE: 1"=2000'



SOILS MAP
APPROXIMATE SCALE: 1"=400'

GENERAL NOTES

- BENCHMARK: MAD HALL SET 2' ABOVE GROUND LEVEL ON PPL UTILITY POLE 46888-52201 LOCATED WEST OF THE ACCESS DRIVE. 532178.93 NORTHING 2437507.84 EASTING ELEVATION 756.92
- ALL EXISTING UTILITIES HAVE BEEN SHOWN IN ACCORDANCE WITH THE BEST AVAILABLE INFORMATION.
- THE CONTRACTOR SHALL DETERMINE THE EXACT LOCATION OF ALL ABOVE GROUND AND BELOW GROUND UTILITIES AND STRUCTURES AND WILL BE RESPONSIBLE FOR THE PROTECTION OF THESE UTILITIES AND STRUCTURES AT ALL TIMES.
- THE CONTRACTOR SHALL TAKE ALL NECESSARY PRECAUTIONS TO PROTECT THE EXISTING UTILITIES AND MAINTAIN UNINTERRUPTED SERVICE AND ANY DAMAGE SHALL BE REPAIRED IMMEDIATELY AND COMPLETELY AT HIS EXPENSE.
- THE PLAN LOCATIONS AND DIMENSIONS SHALL BE STRICTLY ADHERED TO UNLESS OTHERWISE DIRECTED BY THE ENGINEER. PLAN CHANGES, SHOULD THEY BE REQUIRED, ARE SUBJECT TO MUNICIPAL AND COUNTY ORDINANCES.
- CONTRACTOR SHALL BE RESPONSIBLE FOR MAINTAINING A COPY OF ALL PERMITS RELATED TO THE CONSTRUCTION SHOWN ON THESE PLANS ON THE JOB SITE AT ALL TIMES.
- THE CONTRACTOR SHALL VERIFY ALL DIMENSIONS ON THE PROJECT SITE PRIOR TO THE START OF CONSTRUCTION.
- CONTRACTOR SHALL NOTIFY ALL UTILITIES REQUIRED PER ACT 187 FOR VERIFICATION AND LOCATION OF UTILITIES PRIOR TO CONSTRUCTION.
- THE CONTRACTOR SHALL BE RESPONSIBLE FOR ALL JOB SITE SAFETY, ALL TRAFFIC CONTROL, TRENCH BARRICADES, COVERING, SHEETING AND SHORING.
- ALL BERMS AND IMPOUNDMENTS SHALL BE CONSTRUCTED IN 6" LIFTS AND COMPACTED TO 85% PROCTOR DENSITY.
- THE CONTRACTOR SHALL BE RESPONSIBLE FOR COORDINATING ACCESS TO THE SITE WITH THE LANDOWNERS.
- THE LIMESTONE AGGREGATE SHALL CONTAIN NOT LESS THAN NINETY PERCENT (90%) CALCIUM CARBONATE CONTENT, NOT MORE THAN FIVE PERCENT (5%) MAGNESIUM OXIDE (MgO), AND NOT MORE THAN FIVE PERCENT (5%) IRON OXIDE (Fe2O3). A SAMPLE OF THE LIMESTONE MUST BE TESTED BY A THIRD PARTY LABORATORY AND THE RESULTS MUST BE SUBMITTED FOR REVIEW PRIOR TO PLACEMENT OF ANY LIMESTONE.
- ALL LIMESTONE AND NON-CALCAREOUS AGGREGATE UTILIZED ON SITE SHALL MEET SPECIFICATION SET FORTH IN PENNDOT PUBLICATION 408/2003. CERTIFICATION WILL BE REQUIRED FOR QUALITY AND CLASSIFICATION OF ALL AGGREGATE UTILIZED.
- THE CONTRACTOR SHALL BE RESPONSIBLE FOR THE REMOVAL AND DISPOSAL FOR ALL UNUTILIZED MATERIAL ON THE SITE.
- ALL CULVERT MATERIAL SHALL BE COMPACTED TO ELIMINATE SEEPAGE.
- MATERIAL FOR CONSTRUCTION OF BERMS SHALL BE CLEAN FILL, FREE OF ORGANIC MATERIAL AND STONES IN EXCESS OF 8" IN DIAMETER.
- TRACKED EQUIPMENT SHALL BE ALLOWED ON-SITE. IT IS THE CONTRACTOR'S RESPONSIBILITY TO REPAIR ANY DAMAGE CAUSED BY SUCH EQUIPMENT.
- THE CONTRACTOR SHALL BE RESPONSIBLE FOR NOTIFYING RETIEW ASSOCIATES, INC. AND THE SCHUYLKILL HEADWATERS ASSOCIATION TEN (10) WORKING DAYS PRIOR TO THE START OF CONSTRUCTION.
- 18" SILT FENCE AND 12" FILTER SOAK AS DETAILED ON SHEET 12 MAY BE USED INTERCHANGEABLY.



FOR RETIEW ASSOCIATES BY:

MANAGER: CHARLES HUBERAK, P.E.
DESIGN BY: CH
SURV. CHIEF: R. ORNER
DRAWN BY: CLM
SCALE: AS NOTED

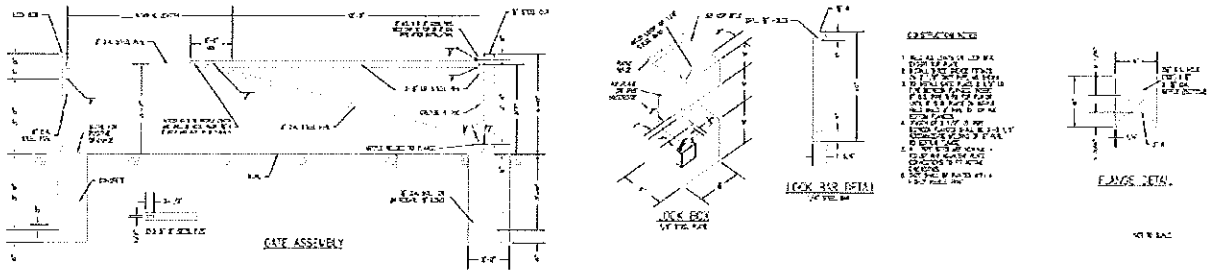
SCHUYLKILL HEADWATERS ASSOCIATION, INC.
P.O. BOX 1385
POTTSVILLE, PA 17901
PHONE: 570-385-2122

RETIEW
Retiew Associates, Inc.
850 E. Main Street, Suite # 220
Schuylkill Haven, PA 17972
Phone (570) 385-2276 • Fax (570) 385-2217
Email: retiew@retiew.com Website: www.retiew.com
Certified • Registered • Licensed • Environmental Consultants

ABANDONED MINE DRAINAGE REMEDIATION
FOR THE
MARY D BOREHOLE
COVER SHEET
SCHUYLKILL TOWNSHIP SCHUYLKILL COUNTY, PA

DATE: AUG. 11, 2011
SHEET NO. 1 OF 13
DWG. NO. 08-04234-008

NO.	DATE	REVISION
1	9/27/11	REVISED PER SCD COMMENTS DATED 9/7/11
2	6/25/12	MINOR REVISIONS FOR BIDDING
3	9/14/12	CHANGE ORDER #1 SCOPE REDUCTION



DRAINLINE OUTLET FES-2A
ELEVATION = 780.50
R-6 RIP RAP
L_a = 40 FT
W = 19 FT

ACCESS GATE
NOT TO SCALE

24" SLOPP RISER STRUCTURE
TOP ELEVATION 795.00

VALLEY STREET

SANDERSON STREET

PennDOT TYPE 2
STRONG POST GUIDERAIL
TIED INTO EXISTING

R-4 LIMESTONE
RIP RAP

PennDOT TYPE 2
STRONG POST GUIDERAIL

MAINTAINED WETLAND CELL
35,484 SF (0.81 AC)
BOTTOM EL. = 793.00
WSEL = 794.52

SETTLING POND
14,844 SF (0.34 AC)
BOTTOM EL. = 791.00
WSEL = 794.52

FLUSH MAINTAINED
WETLANDS/POND
TOTAL AREA
33,140 SF (0.76 AC)
WETLANDS AREA
20,428 SF (0.46 AC)
BOTTOM EL. = 780.50
WSEL = 782.00

R-6 RIP RAP
L_a = 40 FT
W = 19 FT

DRAINLINE OUTLET FES-2B
ELEVATION = 780.50

8"x3" AGRI-DRAIN INLET
WATER CONTROL STRUCTURE
SEE DETAIL SHEET 10

TREATMENT CELL
30,364 SF (0.70 AC)
BOTTOM EL. = 784.00
WSEL = 791.03

DRAINLINE OUTLET FES-1
ELEVATION = 785.50

R-6 RIP RAP
L_a = 7 FT
W = 4.8 FT

R-6 RIP RAP
L_a = 4 FT
W = 3.6 FT

R-4 RIP RAP LINED
SPILLWAY AND CHANNEL

DRAINLINE OUTLET FES-3
ELEVATION = 780.00

LEGEND

EXISTING EDGE OF PAVEMENT	[Symbol]
EXISTING EDGE OF ACCESS DRIVE	[Symbol]
EXISTING EASEMENT LINE	[Symbol]
EXISTING LOT LINE	[Symbol]
EXISTING EDGE OF STREAM	[Symbol]
EXISTING FLOODWAY LIMIT	[Symbol]
EXISTING TREELINE	[Symbol]
EXISTING UTILITY POLE	[Symbol]
EXISTING OVERHEAD TELEPHONE LINE	[Symbol]
EXISTING OVERHEAD ELECTRIC LINE	[Symbol]
EXISTING RAIL	[Symbol]
EXISTING STORM PIPE	[Symbol]
EXISTING MAJOR CONTOUR LINE	[Symbol]
EXISTING MINOR CONTOUR LINE	[Symbol]
EXISTING WETLAND LIMIT	[Symbol]
EXISTING WETLAND DRAINAGE AREA LIMIT	[Symbol]
PROPOSED CONSTRUCTION FENCE	[Symbol]
PROPOSED BUILDING	[Symbol]
PROPOSED ACCESS ROAD	[Symbol]
PROPOSED TREATMENT TANK	[Symbol]
PROPOSED TREELINE	[Symbol]
PROPOSED MAJOR CONTOUR LINE	[Symbol]
PROPOSED MINOR CONTOUR LINE	[Symbol]
PROPOSED SPOT ELEVATION	[Symbol]
PROPOSED STORM PIPE	[Symbol]
PROPOSED SWALE/CHANNEL	[Symbol]
PROPOSED ELECTRIC LINE	[Symbol]
PROPOSED VALVE	[Symbol]
PROPOSED WATER CONTROL STRUCTURE	[Symbol]
PROPOSED PALLETED LINE	[Symbol]
FLUSH DRAIN SECTION	[Symbol]
PROPOSED RIP RAP EROSION PROTECTION	[Symbol]

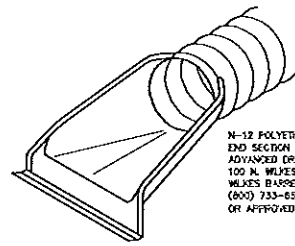


MANAGER	CHARLES MYERS, P.E.
DESIGN BY	SHUYI CHEN
REVISION NO.	R-ORNER
DATE	04/11/2011
FOR REVIEW ASSOCIATES BY:	
DATE	
REASON	

SCHUYLKILL HEADWATERS
ASSOCIATION, INC.
P.O. BOX 1385
POTTSVILLE, PA 17901
PHONE: 570-385-2122

RETIEW
RETIEW Associates, Inc.
Schuykill Township, PA 17972
Phone (570) 385-2270 • Fax (570) 385-2217
Email: retiew@retiew.com Website: www.retiew.com

ABANDONED MINE DRAINAGE REMEDIATION
FOR THE
MARY D BOREHOLE
PROPOSED SITE PLAN
SCHUYLKILL TOWNSHIP SCHUYLKILL COUNTY, PA

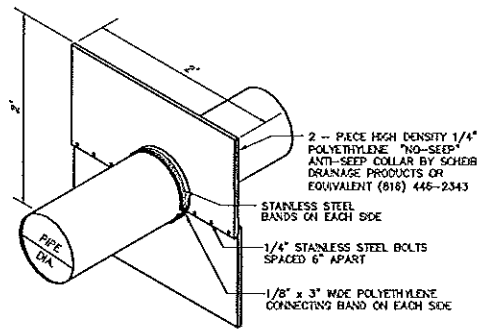


N-12 POLYETHYLENE FLARED END SECTION PER: AOS ADVANCED DRAINAGE SYSTEMS, INC. 100 N. MILKES BARRE BLVD. MILKES BARRE, PA 18702 (610) 733-4514 OR APPROVED EQUIVALENT

ISOMETRIC

POLYETHYLENE FLARED END SECTION (FES)

NOT TO SCALE



2 - PIECE HIGH DENSITY 1/4" POLYETHYLENE "NO-SEEP" ANTI-SEEP COLLAR BY SCHEER DRAINAGE PRODUCTS OR EQUIVALENT (818) 446-2343
STAINLESS STEEL BANDS ON EACH SIDE
1/4" STAINLESS STEEL BOLTS SPACED 6" APART
1/8" x 3" WIDE POLYETHYLENE CONNECTING BAND ON EACH SIDE

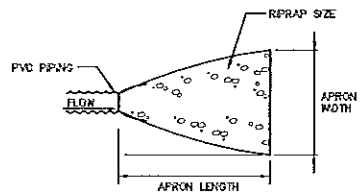
OUTLET	NUMBER OF COLLARS REQUIRED	DISTANCE FROM UPSTREAM END OF PIPE TO 1ST COLLAR	DISTANCE BETWEEN COLLARS
SETTLING POND DRAINPIPE	2	8'	22'
WETLAND CELL DRAINPIPE	1	6'	N/A
TREATMENT CELL DRAINPIPES (2)	3	12'	17'
FLUSHING POND DRAINPIPE	1	8'	N/A

NOTES:

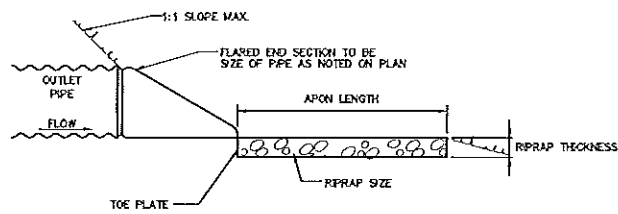
- SEE BASIN EMBANKMENT DETAIL FOR LOCATION WITHIN BERM.
- APPLY MASTIC TO CONNECTING BANDS AND SET IN PLACE. BOLT HALVES TOGETHER & INSTALL METAL BANDS ON SLIT HALVES OF COLLAR. TIGHTEN BOLTS AND BANDS. APPLY MASTIC AS NEEDED TO INSURE GOOD SEAL. BACKFILL AND HAND TAMP.

ANTI-SEEP COLLAR-POLYETHYLENE

NOT TO SCALE



PLAN



CROSS-SECTION

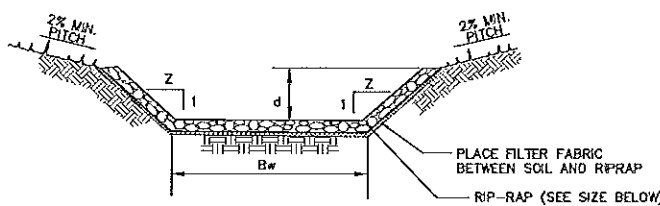
OUTLET	PIPE DIA.	TAILWATER CONDITION	MAX FLOW	MAX VELOCITY	APRON LENGTH	APRON WIDTH	RIPRAP SIZE	RIPRAP THICKNESS
FES-1	8"	MAX	3.87	11.08	7'	4.8'	R-6	30"
FES-2 A & B	12"	MAX	13.89	17.69	40'	19'	R-6 *	30"
FES-3	8"	MAX	2.46	7.04	4'	3.6'	R-4	18"

NOTES:

- MERGE END SECTION INTO RIPRAPPED SPILLWAYS WHERE REQUIRED.
- SHOULD REQUIRED SPILLWAY RIPRAP SIZE EXCEED REQUIRED OUTLET PROTECTION RIPRAP USE THE REQUIRED SPILLWAY RIPRAP.
- ALL TREATMENT CELL PIPES DISCHARGE TO THE FLUSHING POND WHICH IS DESIGNED TO SETTLE THE IRON SEDIMENT AND WILL SERVE AS A STILLING POND FOR THESE HIGH VELOCITY DISCHARGES.

FLARED END SECTION OUTLET PROTECTION

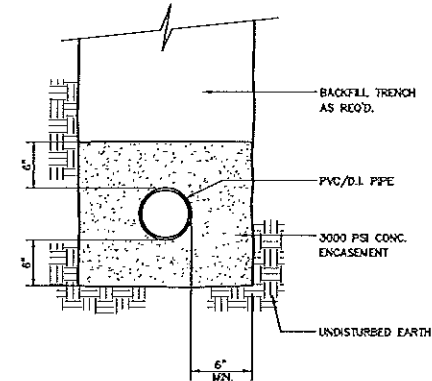
NOT TO SCALE



RIP-RAP CHANNEL DETAIL

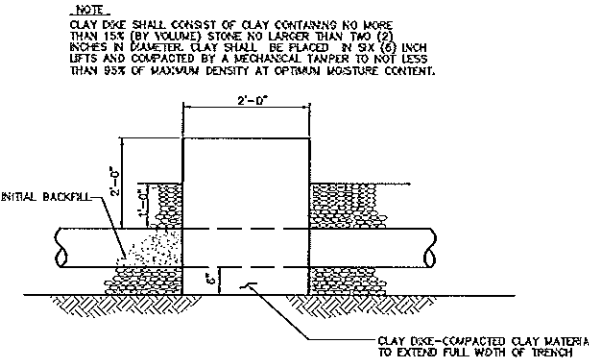
NOT TO SCALE

CHANNEL	B _w	d	Z	MIN. SLOPE	MAX. SLOPE	EROSION PROTECTION
WETLAND CELL EMERGENCY SPILLWAY	20'	1'	3	9.87%	9.87%	R-4 RIPRAP, 18" THICK
OUTFALL CHANNEL SEG. #1	3'	3'	2	5.68%	5.68%	R-4 LIMESTONE RIPRAP, 18" THICK
OUTFALL CHANNEL SEG. #2	6'	2'	3	1.00%	1.00%	R-4 LIMESTONE RIPRAP, 18" THICK
FLUSH POND EMERGENCY SPILLWAY	20'	1'	3	8.00%	8.00%	R-4 RIPRAP, 18" THICK



CONCRETE ENCASUREMENT DETAIL

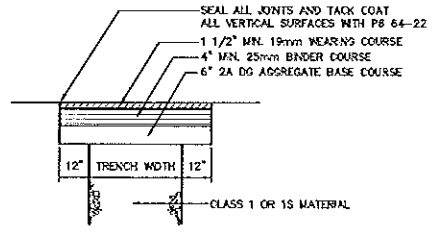
NOT TO SCALE



CLAY DIKE DETAIL

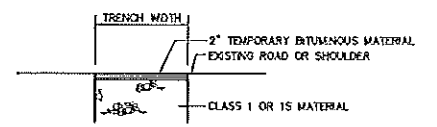
NOT TO SCALE

- NOTES:
- ALL VERTICAL CUTS SHALL BE SMOOTH ONLY
 - MATERIAL AND PLACEMENT FOR COARSE AND FINE AGGREGATES SHALL BE IN ACCORDANCE WITH PENNDOT SPECIFICATIONS PUBLICATIONS 408, LATEST EDITION.



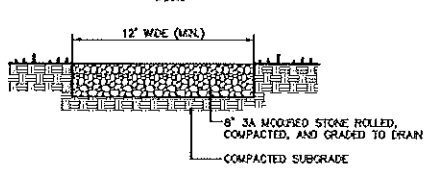
PERMANENT PennDOT AND TWP./BORO. ROAD RESTORATION

NOT TO SCALE



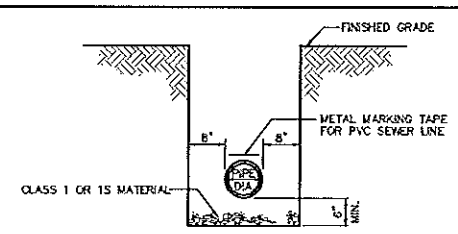
TEMPORARY RESTORATION FOR PennDOT & TOWNSHIP ROADWAYS, ALLEYS OR SHOULDERS

NOT TO SCALE



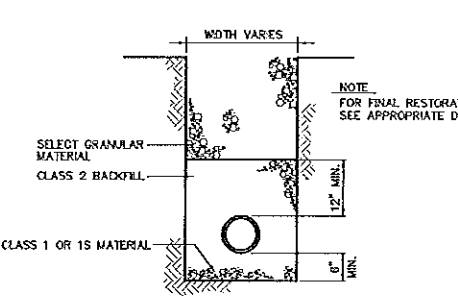
STONE ROADWAY SECTION

NOT TO SCALE



TYPICAL TRENCH DETAIL

NO SCALE

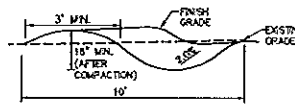


TYPICAL BACKFILL (NON-PAVED AREAS)

NO SCALE

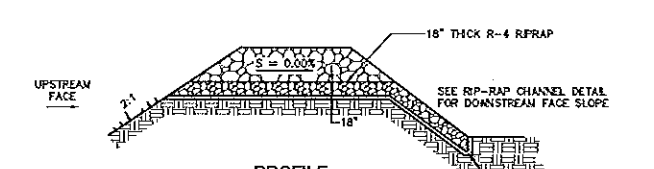
- CLASSIFICATION OF MATERIALS:
- CLASS 1 - THIS MATERIAL SHALL CONSIST OF 2A COURSE AGGREGATE OR 2B STONE FREE OF SLAG, EXCEPT IN NET OR UNSTABLE AREAS WHERE THE BEDDING MAY BE NO. 8 OR NO. 57 COURSE AGGREGATE. ALL MATERIALS SHALL CONFORM TO PENNDOT PUBLICATION 408, SECTION 703.3.
 - CLASS 1S - THIS MATERIAL SHALL CONSIST OF NO. 8 COURSE AGGREGATE FREE OF SLAG, EXCEPT IN NET OR UNSTABLE AREAS WHERE THE BEDDING MAY BE NO. 8 OR NO. 57 COURSE AGGREGATE. ALL MATERIALS SHALL CONFORM TO PENNDOT PUBLICATION 408, SECTION 703.3.
 - CLASS 2 - THIS MATERIAL SHALL CONSIST OF EXCAVATED MATERIAL FREE FROM CONCRETES, ASHES, REFUSE, VEGETABLE OR ORGANIC MATERIAL, BOULDERS, ROCKS NO LARGER THAN FOUR (4) INCHES IN DIMENSION, STONE OR OTHER MATERIAL WHICH IN THE OPINION OF THE ENGINEER IS UNSUITABLE.

- CONSTRUCTION NOTES:
- BROAD-BASED DIP SHOULD BE INSTALLED ACROSS THE ACCESS PATH TO THE UNNAMED TRIBUTARY AS SHOWN ON THE PLAN.
 - CONSTRUCT AT A SLOPE OF 2.0% AND DISCHARGE TO THE UNNAMED TRIBUTARY.
 - DO NOT PLACE ANY OBSTRUCTIONS IN BROAD-BASED DIP (E.G. STRAW BALES, SILT FENCE, ROCK FILTERS, ETC.) WHERE NEEDED, THEY SHOULD BE LOCATED BELOW THE DISCHARGE END OF THE BROAD-BASED DIP.
 - REMOVE ACCUMULATED SEDIMENT AFTER EACH WORK DAY.

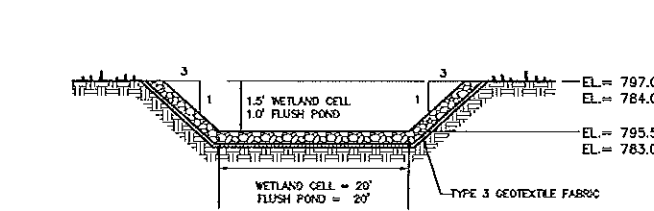


BROAD-BASED DIP

NOT TO SCALE



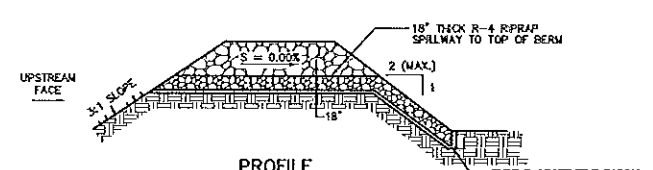
PROFILE



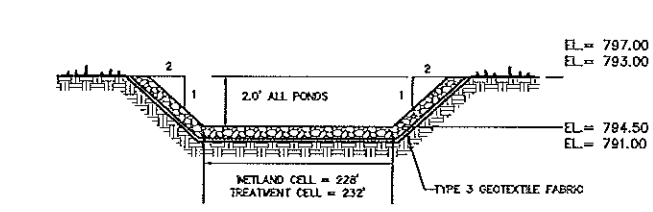
SECTION EMERGENCY SPILLWAY

NOT TO SCALE

OUTLET	APRON LENGTH	APRON WIDTH	RIPRAP SIZE	RIPRAP THICKNESS
WETLAND CELL	20'	15'	R-4	18"
FLUSH POND	20'	15'	R-4	18"



PROFILE



SECTION BROAD CRESTED SPILLWAY

NOT TO SCALE

OUTLET	APRON LENGTH	APRON WIDTH	RIPRAP SIZE	RIPRAP THICKNESS
WETLAND CELL	228'	15'	R-4	18"
TREATMENT CELL	232'	15'	R-4 LIMESTONE	18"

FOR REVIEW ASSOCIATES BY:

FOR REVIEW ASSOCIATES BY: RETIEW ASSOCIATES, INC. 350 E. MAIN STREET, SUITE # 220 SCHUYLKILL, PENN., PA 17972 Phone (717) 385-2270 Fax (717) 385-2277 Website: www.retiew.com

FOR THE ABANDONED MINE DRAINAGE REMEDIATION MARY D BOREHOLE DETAIL SHEET SCHUYLKILL TOWNSHIP SCHUYLKILL COUNTY, PA

DATE: AUG. 11, 2011

SHEET NO. 8 OF 13

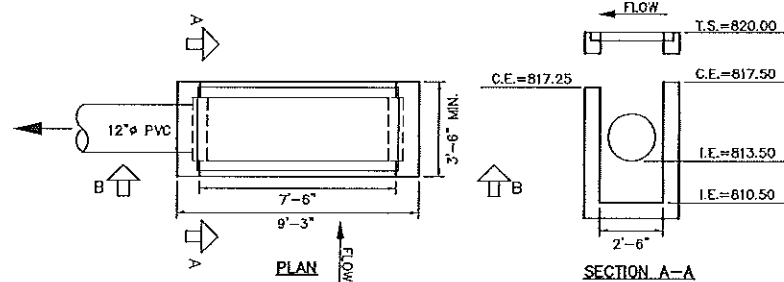
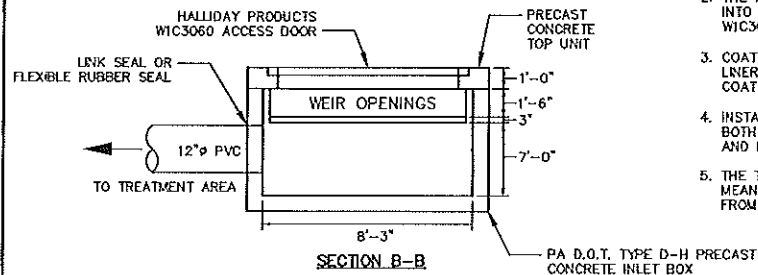
DWG. NO. G8-04234-008

REVISIONS:

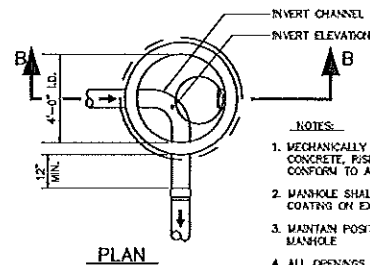
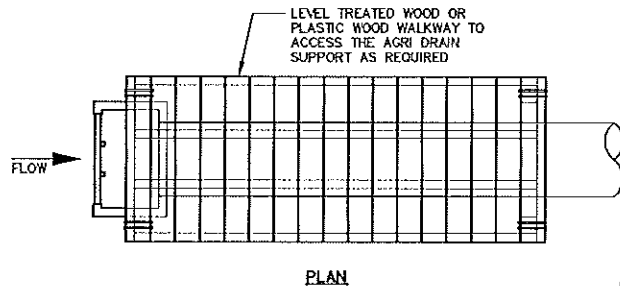
NO.	DATE	DESCRIPTION
1	9/27/11	REVISED PER SCD COMMENTS DATED 9/7/11
2	9/25/12	MINOR REVISIONS FOR BIDDING
3	9/14/12	CHANGE ORDER #1 SCOPE REDUCTION

NOTES

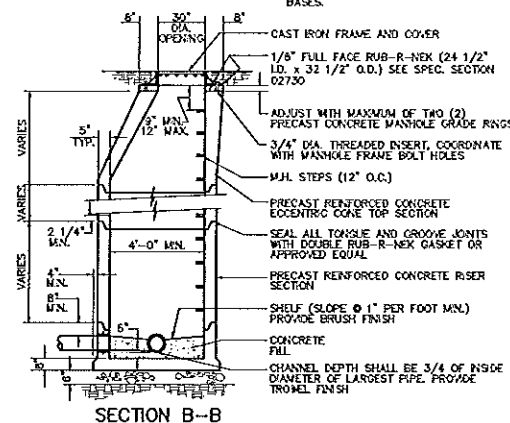
1. CONCRETE STRUCTURE STEEL REINFORCING DESIGN SHALL BE BY THE PRECAST MANUFACTURER. THE REINFORCING DESIGN SHALL BE INCLUDED IN THE SHOP DRAWING SUBMITTAL. THE DESIGN SHALL BE SEALED BY A PROFESSIONAL ENGINEER LICENSED IN THE STATE OF PENNSYLVANIA.
2. THE ALUMINUM CHECK PLATE ACCESS HATCH SHALL BE CAST INTO THE TOP OF THE STRUCTURE AND SHALL BE HALLIDAY WIC3060 OR EQUAL WITH PADLOCK AND HASP.
3. COAT INTERIOR WITH EITHER PVC LINER SYSTEM OR HDPE/PP-R LINER SYSTEM AS SPECIFIED IN SPECIFICATION SECTION 02730. COAT EXTERIOR WITH 2 COATS PENNSBURY 32-B-4 COATING.
4. INSTALL 1/4" 304 S.S. BAR SCREEN, WITH BARS 6" O.C. ON BOTH WEIR OPENINGS. SCREEN SHALL BE ATTACHED TO FRONT AND BACK FACE WITH S.S. ANCHOR BOLTS.
5. THE TOP UNIT SHALL BE ANCHORED TO INLET BOX BY PHYSICAL MEANS I.E. EPOXY COATED REBAR POSTS, TO PREVENT THE UNIT FROM SLIDING OFF THE INLET BOX FROM FLOWING WATER.



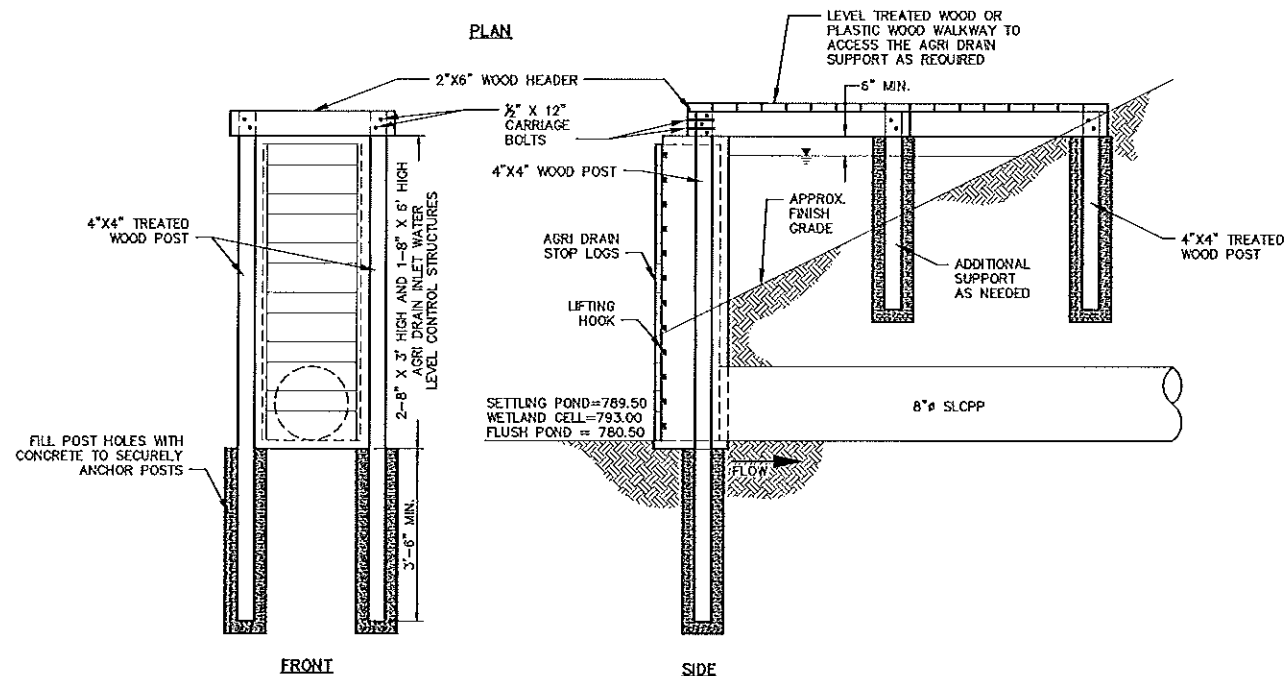
INFLUENT STRUCTURE
NOT TO SCALE



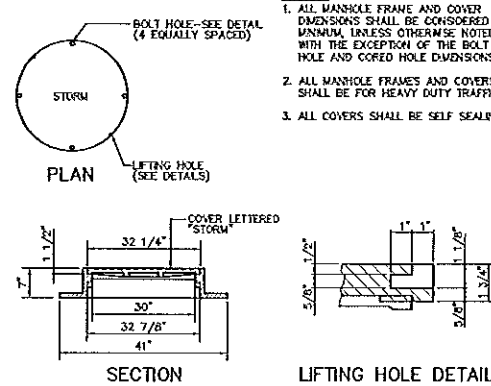
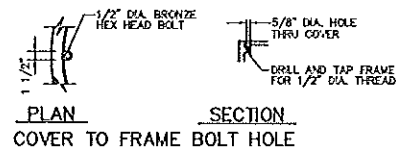
- NOTES**
1. MECHANICALLY VIBRATED PRECAST CONCRETE, RISER AND TOP SHALL CONFORM TO A.S.T.M. SPEC. C-478.
 2. MANHOLE SHALL HAVE BITUMASTIC COATING ON EXTERIOR WALLS.
 3. MAINTAIN POSITIVE GRADE THROUGH MANHOLE.
 4. ALL OPENINGS AROUND PIPES SHALL BE FINISHED WITH NON-SHINK GROUT.
 5. CONTRACTOR MAY USE PRECAST INVERT BASES.



PRECAST CONCRETE MANHOLE
NOT TO SCALE



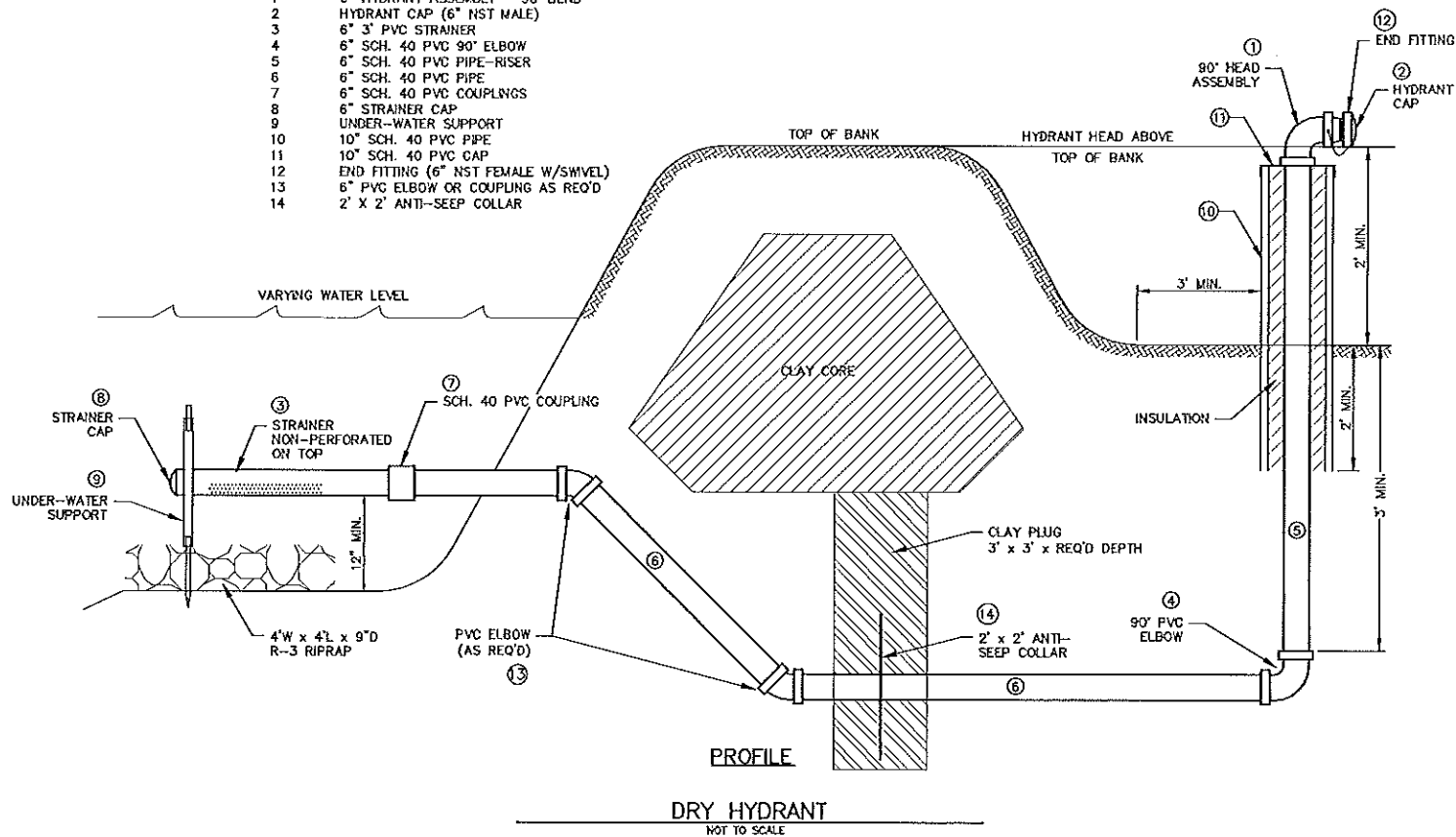
AGRI-DRAIN INLET WATER LEVEL CONTROL STRUCTURE AND WALKWAY ASSEMBLY DETAIL
NOT TO SCALE



WATERTIGHT FRAME AND COVER
NOT TO SCALE

MATERIALS KEY

KEY #	ITEM
1	6" HYDRANT ASSEMBLY - 90° BEND
2	HYDRANT CAP (6" NST MALE)
3	6" 3" PVC STRAINER
4	6" SCH. 40 PVC 90° ELBOW
5	6" SCH. 40 PVC PIPE-RISER
6	6" SCH. 40 PVC PIPE
7	6" SCH. 40 PVC COUPLINGS
8	6" STRAINER CAP
9	UNDER-WATER SUPPORT
10	10" SCH. 40 PVC PIPE
11	10" SCH. 40 PVC CAP
12	END FITTING (6" NST FEMALE W/SW/VEL)
13	6" PVC ELBOW OR COUPLING AS REQ'D
14	2' x 2' ANTI-SEEP COLLAR



DRY HYDRANT
NOT TO SCALE

Installation Techniques - Link-Seal® Modular Seals



1. Center the pipe, cable or conduit in well opening or manhole. Make sure the pipe will be adequately supported on both ends. Link-Seal® modular seals are not intended to support the weight of the pipe.
2. Loosen rear pressure plate with nut just enough so links move freely inward and away from each other - connect both ends of bolt.
3. Check to be sure all bolt heads are facing the installer. Extra slack or sag is normal. Do not remove links if extra slack exists. Note: On smaller diameter pipe, links may need to be stretched.
4. Slide bolt assembly into annular space. For larger size bolts, start inserting Link-Seal modular seal assembly at the 6 O'Clock position and work both sides up toward the 12 O'Clock position in the annular space.



5. Start at 12 O'Clock and tighten bolt until rubber begins to 'bulge'. Do not tighten any bolt more than 4 turns at a time. Continue in a clockwise manner until links have been uniformly compressed. (Approx. 2 or 3 rotations)
6. Make 2 or 3 more passes at 3 turns per bolt, tightening at both clockwise.

Always Wear Safety Equipment When Installing Link-Seal® modular seals!

- Always Wear Safety Equipment When Using Link-Seal® Modular Seals!**
- Link-Seal® Modular Seal - Do's**
1. Make sure pipe is centered.
 2. Install the bolt with the pressure plates evenly spaced.
 3. Install the exact number of links indicated in sizing charts.
 4. Check to make sure pipe is supported properly during backfill operations.
 5. Make sure seal assembly and pipe surfaces are free from dirt.
- Link-Seal® Modular Seal - Don'ts**
1. Don't install the bolt with the pressure plates aimed in irregular directions (Staggered).
 2. Don't install Link-Seal® modular seals with spiral weld pipe.
 3. Don't tighten seal bolt completely before moving on to the next operation.
 4. Don't use high speed power tools (400 rpm or less).
 5. Do not use power tools with Link-Seal® modular seal 318 steel test bolts.



LINK-SEAL NOTES:

1. CONTRACTOR SHALL PROVIDE AND INSTALL LINK-SEALS WITH SLEEVES AT ALL PIPE PENETRATIONS. SLEEVES SHALL BE PRECAST INTO THE STRUCTURE WALLS AS NOTED (NO COLD JOINTS), TO BECOME AN INTEGRAL PART OF THE CONCRETE. GROUTING SLEEVES IN PLACE WITH COLD JOINTS WILL NOT BE ACCEPTABLE.
2. AN ALTERNATIVE TO THE PRECAST SLEEVE IS FOR THE CONTRACTOR TO CORE DRILL ALL PIPE PENETRATIONS IN THE CORRECT LOCATION AND INSTALL LINK-SEALS.
3. CONTRACTOR SHALL DETERMINE CORRECT SIZE OF ALL LINK-SEALS, SLEEVES AND CORE DRILLING.
4. ALL SHOP DRAWINGS SHALL SHOW AND CALL OUT LOCATION OF PRECAST SLEEVES OR CORE DRILLING.

FOR REVIEW ASSOCIATES BY:

MANAGER: CHARLES W. MYERS, P.E.
DESIGN BY: CH
SURV. CHECK: R. ORNER
DRAWN BY: CLM

FOR REVIEW ASSOCIATES BY:

MANAGER: CHARLES W. MYERS, P.E.
DESIGN BY: CH
SURV. CHECK: R. ORNER
DRAWN BY: CLM

DATE: AUG. 11, 2011

SHEET NO. 10 OF 13

DWG. NO. 08-04234-008

FOR THE
MARY D BOREHOLE
DETAILS SHEET

ABANDONED MINE DRAINAGE REMEDIATION
SCHUYLKILL TOWNSHIP
SCHUYLKILL COUNTY, PA.

RETIREMENT ASSOCIATION, INC.
P.O. BOX 1385
POTTSVILLE, PA 17901
PHONE: 570-385-2122

SCALE: NO SCALE

EROSION & SEDIMENT POLLUTION CONTROL NOTES:

STANDARD SEDIMENT AND EROSION CONTROL PLAN NOTES

- 102.2(A) THIS CHAPTER REQUIRES PERSONS PROPAGATING OR CONDUCTING EARTH DISTURBANCE ACTIVITIES TO DEVELOP, IMPLEMENT AND MAINTAIN BMPs TO MINIMIZE THE POTENTIAL FOR ACCELERATED EROSION AND SEDIMENTATION.
102.4(b)(3) THE EROSION AND SEDIMENT CONTROL PLAN SHALL BE PREPARED BY A PERSON TRAINED AND EXPERIENCED IN EROSION AND SEDIMENT CONTROL METHODS AND TECHNIQUES...
1. VEHICLES AND EQUIPMENT MUST ENTER AND EXIT THE CONSTRUCTION SITE VIA THE ROCK CONSTRUCTION ENTRANCE LOCATED ON VALLEY STREET.

GENERAL SEDIMENT AND EROSION CONTROL METHODS/PROCEDURES

- 1. IN ALL CASES, THE SMALLEST PRACTICAL AREA OF STABLE LAND SURFACE SHALL BE DISTURBED.
2. UTILITY EXCAVATIONS SHALL BE OPEN ONLY LONG ENOUGH TO PROPERLY INSTALL AND INSPECT ALL UNDERGROUND FACILITIES IN ACCORDANCE WITH APPLICABLE SPECIFICATIONS.
3. EXCAVATED MATERIAL (SPILL) SHALL BE PLACED UP SLOPE FROM THE EXCAVATION WHENEVER POSSIBLE. RUNOFF FROM SPILL PILES SHALL BE DIRECTED THROUGH A SEDIMENT FILTER STRUCTURE AND DISCHARGED IN A NON-EROSIVE MANNER.

SEEDING NOTES: PERMANENT (CONTINUED)

Table with columns: TYPE, SM SEED MIXTURE, MAXIMUM WEED SEED PERCENT, MINIMUM PURITY PERCENT, MINIMUM QUANTITY PURE LIVE SEED LBS./ACRE. Lists various seed mixtures like Orchardgrass, Ryegrass, and Bluegrass.

RESTORATION OF PLANTING AREAS

- 1. IF EARTH DISTURBANCE OCCURS DURING THE MONTHS OF NOVEMBER THROUGH MARCH, THEN AROOSTOOK WINTER RYE SHALL BE APPLIED TO DISTURBED AREAS AS A TEMPORARY SEED MIXTURE.
2. FINAL RESTORATION SHALL BE PERFORMED NO LATER THAN THE START OF THE NEXT PLANTING SEASON FOLLOWING CONSTRUCTION.
3. TOPSOIL SHALL BE FREE FROM SUBSOIL, BRUSH, WEEDS, OR OTHER LITTER, CLAY LUMPS AND STONES...

SEEDING NOTES: TEMPORARY

- 1. CLEAN CUT OR MEAT STRAW SHALL BE FREE FROM MATURE SEED-BEARING STALKS OR ROOTS OF PROHIBITED OR NOxious WEEDS AS DEFINED BY THE PENNSYLVANIA SEED ACT OF 1965.
2. SEED MIXTURE SHALL BEAR A GUARANTEED STATEMENT OF ANALYSIS AND SHALL BE COMPOSED OF THE VARIETIES FOLLOWING AND MIXED IN THE PROPORTIONS SHOWN.
3. ALL SEED SHALL CONFORM TO THE PENNSYLVANIA SEED ACT OF 1965, ACT NO. 187, AS AMENDED...

SEEDING NOTES: PERMANENT

- 1. TOPSOIL SHALL BE LOOSENED TO A DEPTH OF AT LEAST 4", ALL OBJECTIONABLE MATERIAL LARGER THAN 2" SHALL BE REMOVED.
2. DUE TO THE NATURE OF THE SOILS AT THE SITE IT MAY BE NECESSARY TO IMPORT TOPSOIL WITH SUFFICIENT ORGANIC MATERIAL AND WATER CAPACITY TO SUSTAIN THE SPECIFIED SEED MIXTURE.
3. LIMESTONE AND FERTILIZER SHALL BE APPLIED UNFORMALLY TO AREAS TO BE SEEDED, AND WORKED INTO THE SOIL TO A DEPTH OF 2".

SEEDING NOTES: PERMANENT

- 1. THE SEED FURNISHED SHALL NOT BE MORE THAN TWO (2) YEARS OLD AND SHALL HAVE BEEN TESTED FOR GERMINATION NOT MORE THAN SIX (6) MONTHS PRIOR TO SEEDING OPERATIONS.
2. CERTIFICATE OF TEST RESULTS SHALL BE FURNISHED TO THE RESIDENT ENGINEER BEFORE APPROVAL FOR USE OF THE SEED IS GIVEN.
3. SEED, WHICH HAS BECOME WET, MOLDY OR OTHERWISE DAMAGED IN TRANSIT OR STORAGE, WILL NOT BE ACCEPTED.

RESPONSIBILITIES FOR FILL MATERIALS INCLUDING DEFINITION OF ENVIRONMENTAL DUE DILIGENCE & CLEAN FILL

IF THE SITE WILL NEED TO HAVE FILL IMPORTED FROM AN OFF-SITE LOCATION, THE RESPONSIBILITY FOR PERFORMING ENVIRONMENTAL DUE DILIGENCE AND THE DETERMINATION OF CLEAN FILL WILL IN MOST CASES RESIDE WITH THE OPERATOR.
APPLICANTS AND/OR OPERATORS MUST USE ENVIRONMENTAL DUE DILIGENCE TO ENSURE THAT THE FILL MATERIAL ASSOCIATED WITH THIS PROJECT QUALIFIES AS CLEAN FILL.
CLEAN FILL IS DEFINED AS UNCONTAMINATED, NON-WATER SOLUBLE, NON-DECOMPOSABLE, INERT, SOLID MATERIAL...

CONSTRUCTION SEQUENCE

- 1. AT LEAST SEVEN DAYS BEFORE STARTING ANY EARTH DISTURBANCE ACTIVITIES, THE OPERATOR SHALL NOTIFY ALL CONTRACTORS INVOLVED IN THOSE ACTIVITIES, THE LANDOWNER, ALL APPROPRIATE MUNICIPAL OFFICIALS, THE EROSION AND SEDIMENT CONTROL PLAN PREPARED, AND THE SCHUYLKILL CONSERVATION DISTRICT TO AN ON-SITE MEETING.
2. ALL EARTH DISTURBANCE ACTIVITIES SHALL PROCEED IN ACCORDANCE WITH THE FOLLOWING SEQUENCE. EACH STAGE SHALL BE COMPLETED BEFORE ANY FOLLOWING STAGE IS INITIATED.
3. INSTALL ROCK CONSTRUCTION ENTRANCE AT LOCATION WHERE CONSTRUCTION VEHICLES WILL BE ENTERING AND LEAVING THE SITE...

TREATMENT AREA CONSTRUCTION

- 1. INSTALL THE ROCK FILTER OUTLET NEAR THE FLUSH POND EMERGENCY SPILLWAY AND THE 18" TEMPORARY OUTLET PIPE AS INDICATED.
2. CLEAR AND GRAZE IN THE AREA OF TREATMENT SEDIMENT TRAP #1 (FUTURE FLUSH MAINTAINED WETLANDS/POND) AS INDICATED ON THE PLANS.
3. UTILIZE THE EXCAVATED MATERIAL FROM SEDIMENT TRAP #1 TO CONSTRUCT SEDIMENT TRAP #2.
4. STOCKPILE TOPSOIL AT THE DESIGNATED LOCATIONS AND SURROUND WITH 18" SLAT FENCE.
5. BEGON GRASS FOR THE OUTFALL CHANNEL AND TREATMENT CELL.
6. PRIOR TO SEDIMENT TRAP #2 DECOMMISSIONING, THE CONTRACTOR SHALL CONTACT THE SOD.
7. FINAL GRADE, PERMANENTLY SEED, MULCH, AND STABILIZE AREAS AROUND THE TREATMENT CELL AND FLUSH POND WHICH WILL NOT BE RESTORED.

PCSWM OPERATION AND MAINTENANCE SCHEDULE

- 1. THE PROPERTY OWNER SHALL OWN, MAINTAIN AND BE RESPONSIBLE FOR ALL STORM WATER MANAGEMENT AND PERMANENT BMP FACILITIES THAT ARE LOCATED OUTSIDE OF STREET RIGHT-OF-WAYS AS FURNISHED ON THIS POSITION CONSTRUCTION STORM WATER MANAGEMENT PLAN.
2. THE OWNER SHALL CONDUCT A VISUAL INSPECTION OF ALL STORM WATER MANAGEMENT AND PERMANENT BMP FACILITIES AT LEAST EVERY THREE MONTHS AND IMMEDIATELY AFTER STORM EVENTS.
3. THE OWNER SHALL REMOVE ANY ACCUMULATION OF DEBRIS AND REPAIR ANY DAMAGE TO THE STORM WATER MANAGEMENT AND PERMANENT BMP FACILITIES.

FOR REVIEW ASSOCIATES BY: [Signature]
REVIEW ASSOCIATES: [Signature]
SUBMITTED BY: [Signature]
DATE: AUG. 11, 2011
SHEET NO. 11 OF 13
DWS. NO. 08-04234-008

