

MATERIAL: 304L SS	PWT PROJECT NO: CY-PA-08-001
PW TECH NOTES	
ALL WELDS CONTINUOUS	
PLATE MATERIAL TO BE 1/4" 304L GRADE STAINLESS STEEL	
CONTRACTOR TO VERIFY PLATE DIMENSIONS PRIOR TO FABRICATION	

MATERIAL PARTS LIST		
ITEM #	QTY	DESCRIPTION
①	16 EA.	1/2 x 1 1/2" LONG NC HEX HEAD BOLTS, WASHER, LOCK WASHER, + NUT IN 304 STAINLESS STEEL
②	5	EYEBOLT, LIFT W/O SHOULDER, 1/2-13 x 3 9/16
③	1	60 I/s PWT CYCLONE
④	19'-8"	2 x 2 x 1/4" 304L STAINLESS STEEL ANGLE
⑤	6'-3"	2 x 2 x 1/4" 304L STAINLESS STEEL ANGLE
⑥	6 EA.	1/2" x 2" 304 STAINLESS STEEL, NC BOLTS, FULL THREAD
⑦	12 EA.	1/2" 304 STAINLESS STEEL, NC-10 NUTS

NOTE: WEIR PLATE ASSEMBLY IS APPROXIMATELY 300 LBS. (DOES NOT INCLUDE CYCLONE).

DRAWING APPROVAL	
APPROVED:	DATE:
J. HEIST	3/20/09
SIGNATURE:	

FABRICATION	
	
Process Wastewater Technologies 105 Springbrook Place Cary, North Carolina 27518 Tel. 919.858.8887 Fax 919.858.8983 www.PWTech.us	

DRAWING TITLE: CYCLONE WEIR PLATE 150 I/s FABRICATION FOR WEIR PLATE			
PROJECT TITLE: AYLESWORTH CREEK AND SCREEN AYLESWORTH PARK, PA			
DRAWN BY: JLD	DATE: 12/13/08	SCALE: 1"=1'-0"	SHEET SIZE: 11x17
DRAWING NO.: PWT-CY150WP	SHEET: 1 OF 1	REV: 5	

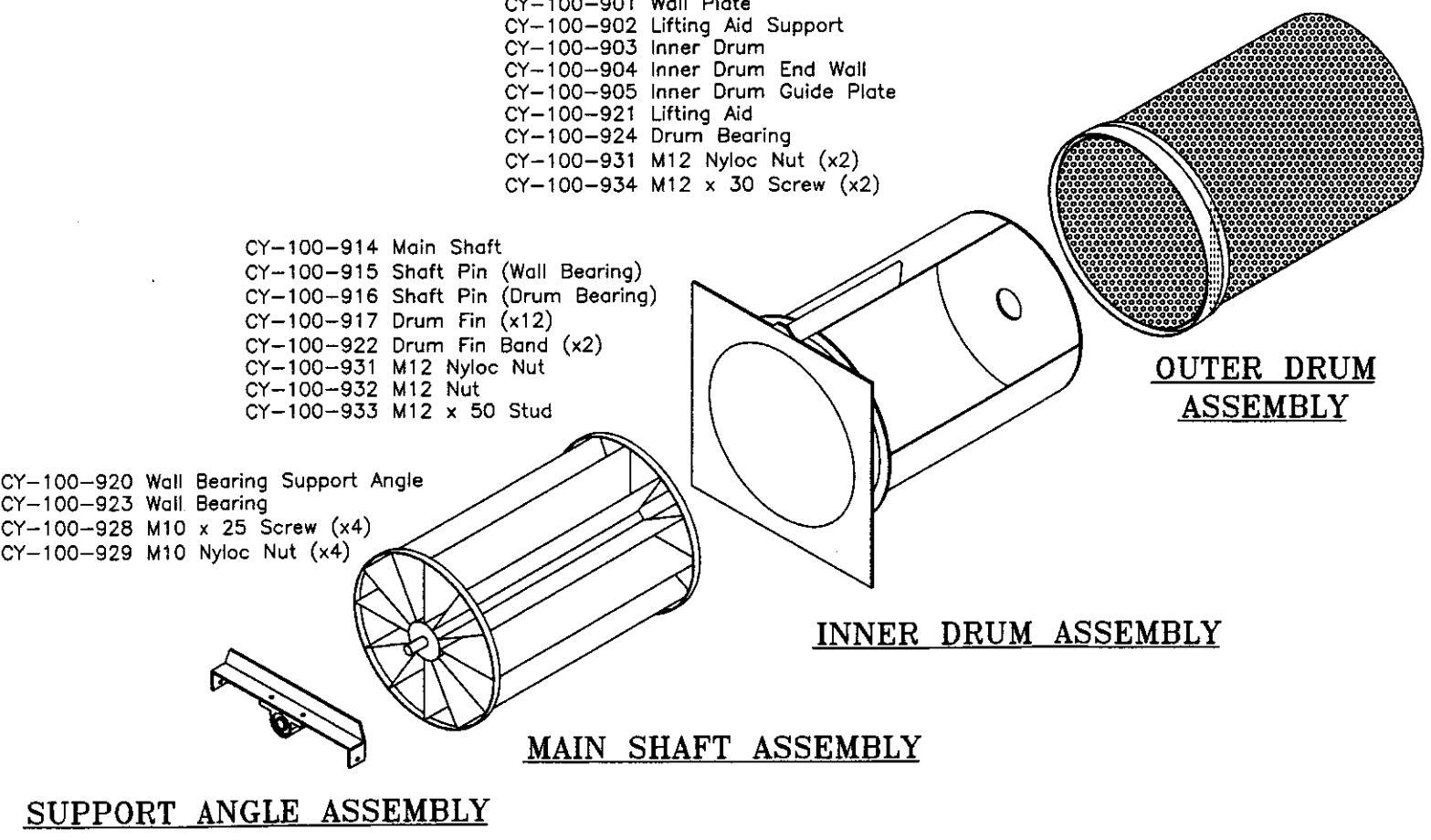
Drawing No.	Sht. of	Rev.	MATERIAL:	PWT PROJECT NO:
PWTech Notes			PW TECH NOTES	
1	All materials to be stainless steel grade as per order			
2				

- CY-100-906 Outer Drum Seal Flat
- CY-100-907 Outer Drum End Flat
- CY-100-908 Outer Drum
- CY-100-909 Outer Drum End Wall
- CY-100-910 Outer Drum Shaft Housing Back Plate
- CY-100-911 Outer Drum Shaft Housing Boss
- CY-100-912 Outer Drum Rubber Seal
- CY-100-925 Adjustment Piece End Plate
- CY-100-926 Adjustment Piece Body
- CY-100-928 M10 x 25 Screw (x6)
- CY-100-929 M10 Nyloc Nut (x6)

- CY-100-901 Wall Plate
- CY-100-902 Lifting Aid Support
- CY-100-903 Inner Drum
- CY-100-904 Inner Drum End Wall
- CY-100-905 Inner Drum Guide Plate
- CY-100-921 Lifting Aid
- CY-100-924 Drum Bearing
- CY-100-931 M12 Nyloc Nut (x2)
- CY-100-934 M12 x 30 Screw (x2)

- CY-100-914 Main Shaft
- CY-100-915 Shaft Pin (Wall Bearing)
- CY-100-916 Shaft Pin (Drum Bearing)
- CY-100-917 Drum Fin (x12)
- CY-100-922 Drum Fin Band (x2)
- CY-100-931 M12 Nyloc Nut
- CY-100-932 M12 Nut
- CY-100-933 M12 x 50 Stud

- CY-100-920 Wall Bearing Support Angle
- CY-100-923 Wall Bearing
- CY-100-928 M10 x 25 Screw (x4)
- CY-100-929 M10 Nyloc Nut (x4)



DRAWING APPROVAL

APPROVED: _____ DATE: _____

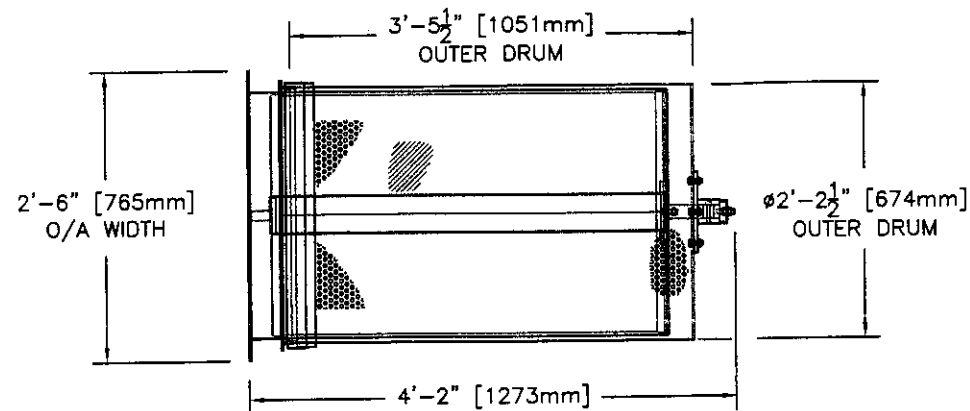
SIGNATURE: _____

RELEASED FOR FABRICATION

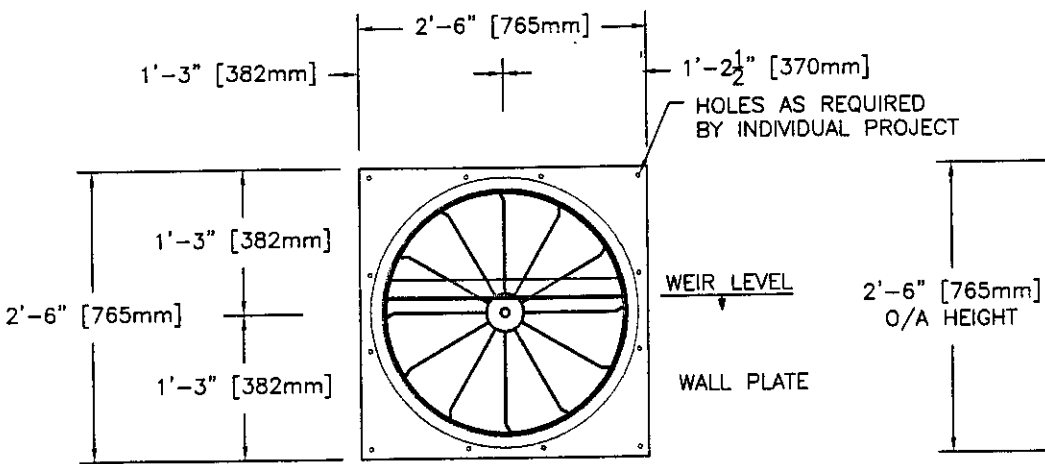
DRAWING TITLE:
 PROJECT TITLE:
 PROJECT TITLE:

DRAWN BY:	DATE:	SCALE:	SHEET SIZE:
DRAWING NO:	SHEET OF	REV:	

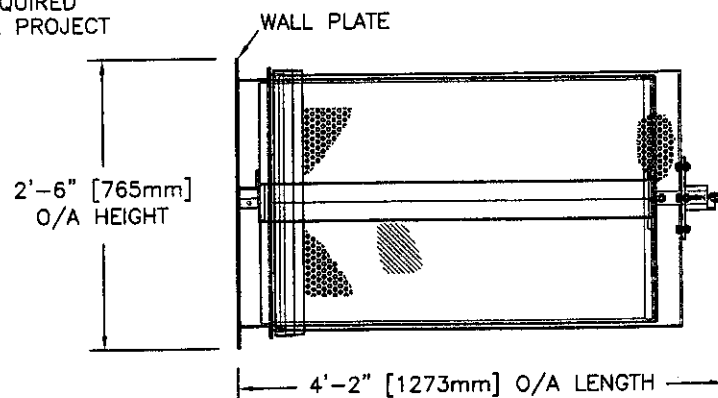
Drawing No.	Sht. of	Rev.	MATERIAL:	PWT PROJECT NO:
PWTech Notes			PW TECH NOTES	
1	All materials to be stainless steel grade as per order			
2	Approx. unit dry weight = 220 Kg			
This Drawing is to be read in conjunction with Drawing Number(s) as follows:				
CY-A-902	PWtech CYCLONE -- COMPONENT SETTING OUT			



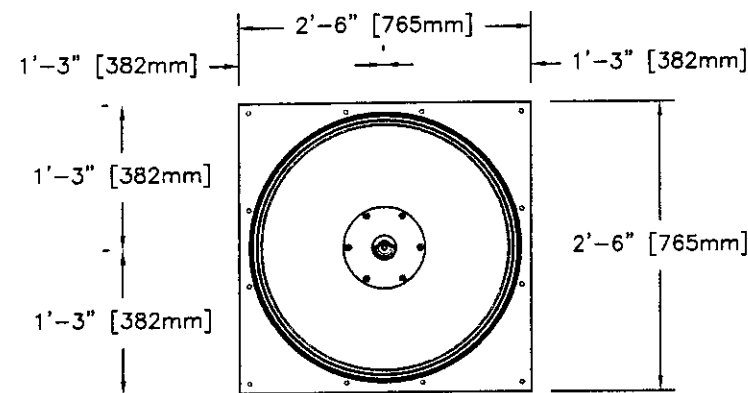
PLAN VIEW COPA CYCLONE



ELEVATION OUTLET FACE (OVERFLOW SIDE)



ELEVATION



ELEVATION SEWER SIDE

DRAWING APPROVAL

APPROVED: _____ DATE: _____

SIGNATURE: _____

RELEASED FOR FABRICATION

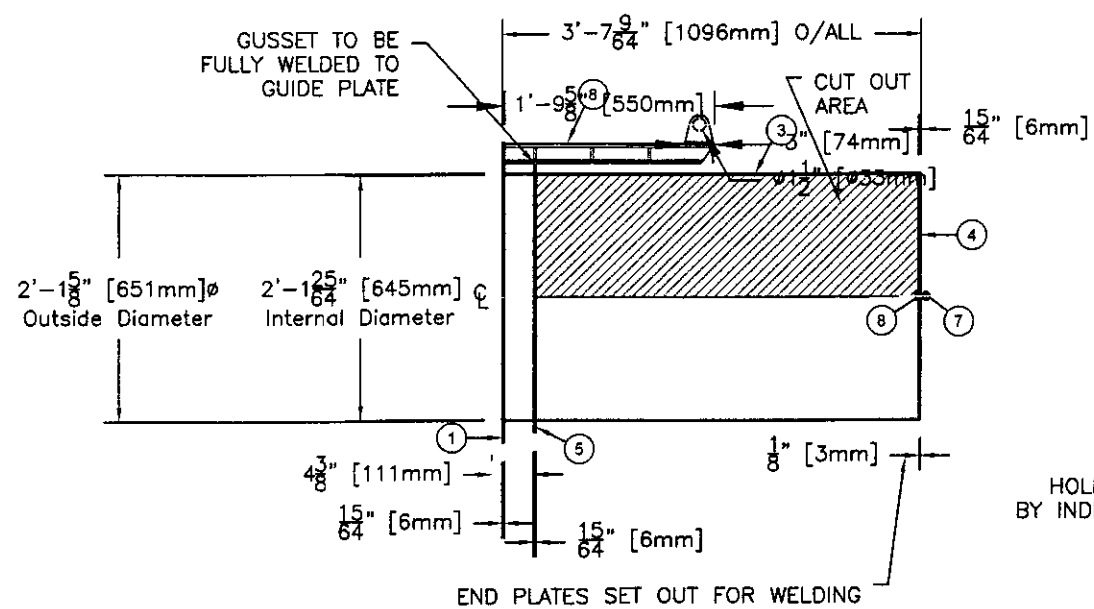
PWtech
 PROCESS WASTEWATER TECHNOLOGIES
 Process Wastewater Technologies
 105 Springbrook Place
 Cary, North Carolina 27518
 Tel. 919.858.8887
 Fax 919.858.8983
 www.PWtech.us

DRAWING TITLE:
 CYCLONE SETTING OUT

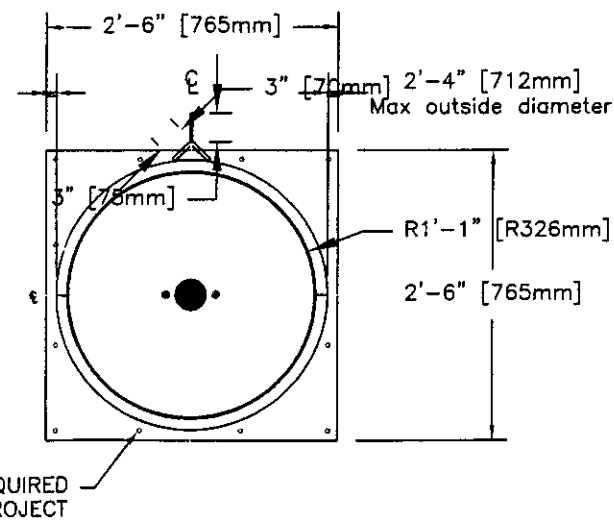
PROJECT TITLE:
 WILSONVILLE PARK P2
 WILSONVILLE WASTEWATER TREATMENT PLANT

DRAWN BY:	DATE:	SCALE:	SHEET SIZE:
DRAWING NO:	SHEET OF	REV:	

Drawing No. 2010-10-10	Sht. of 1	Rev.	MATERIAL:	PWT PROJECT NO: 07-33430
PWTech Notes			PW TECH NOTES	
1	All materials to be stainless steel grade as per order			
2				
Parts List				
Item	Description	Ref		
1	Wall plate	CY-100-901		
2				
3	Cyclone inner drum	CY-100-903		
4	Cyclone inner drum and wall	CY-100-904		
5	Cyclone inner drum guide plate	CY-100-905		
6	M12 x 30 Stainless steel hex head screw	CY-100-934		
7	M12 Stainless steel Nyloc nut	CY-100-931		
8	Lifting arm	CY-100-921		



ELEVATION INNER DRUM ASSEMBLY




END ELEVATION

DRAWING APPROVAL

APPROVED: _____ DATE: _____

SIGNATURE: _____

RELEASED FOR FABRICATION


Process Wastewater Technologies
 105 Springbrook Place
 Cary, North Carolina 27518
 Tel. 919.858.8887
 Fax 919.858.8983
 www.PWTech.us

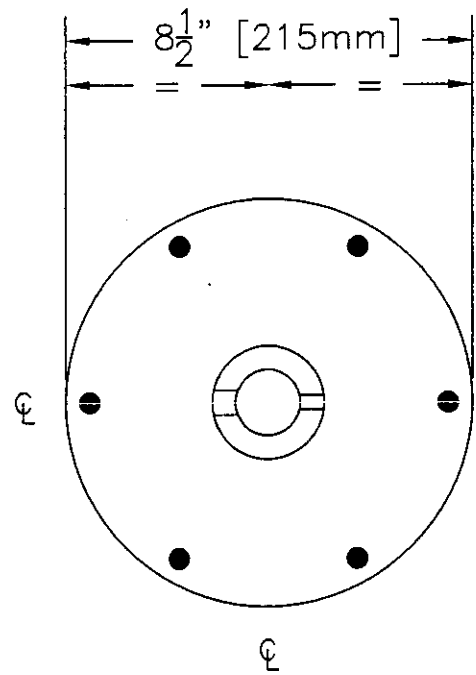
DRAWING TITLE:
PROFILE OF CYCLONE
PART 3010
ATLANTIC CREEK AND DASH

PROJECT TITLE:
ATLANTIC CREEK AND DASH
ATLANTIC CREEK, PA

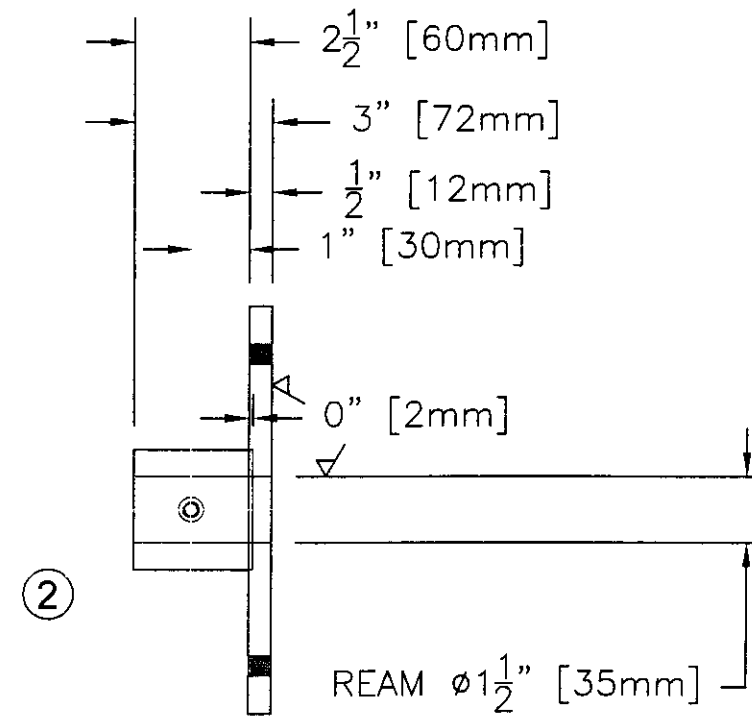
DRAWN BY:	DATE:	SCALE:	SHEET SIZE:
DRAWING NO:	SHEET:	OF	REV:

Drawing No.	Sht. of	Rev.	MATERIAL:	PWT PROJECT NO:
PWTech Notes				
1 All materials to be stainless steel grade as per order				
2				
Parts List				
Item	Description	Ref	Qty	
1	Cyclone outer drum shaft housing back Plate	CY-100-910		
2	Cyclone outer drum shaft housing boss	CY-100-911		

PW TECH NOTES	



①




②

ELEVATION SHAFT HOUSING ASSEMBLY

- 1) LOCATE BOSS IN PLATE RECESS.
- 2) WELD BOSS TO PLATE.
- 3) REAM HOLE AND FACE PLATE AS SHOWN.

SIDE ELEVATION

DRAWING APPROVAL			
APPROVED:	DATE:		
SIGNATURE:			
RELEASED FOR FABRICATION			
 PWTech <small>PROCESS WASTEWATER TECHNOLOGIES</small>		Process Wastewater Technologies 105 Springbrook Place Cary, North Carolina 27518 Tel. 919.858.8887 Fax 919.858.8983 www.PWTech.us	
DRAWING TITLE:			
PROJECT TITLE:			
DRAWN BY:	DATE:	SCALE:	SHEET SIZE:
DRAWING NO:	SHEET OF		REV:

Drawing No.	Sht. of	Rev.	MATERIAL:	PWT PROJECT NO:
PWTech Notes				
1	All materials to be stainless steel grade as per order			
2				
Parts List				
Item	Description	Ref	Qty	
1	Cyclone outer drum and flat	CY-100-907	1	
2	Cyclone outer drum	CY-100-908	1	
3	Cyclone outer drum and wall	CY-100-909	1	
4	Cyclone outer drum shaft housing back Plate	CY-100-910	1	
5	Cyclone outer drum shaft housing boss	CY-100-911	1	
6	Cyclone adjustment piece and plate	CY-100-925	1	
7	Cyclone adjustment piece body	CY-100-926	1	
8	Cyclone outer drum seal flat	CY-100-908	1	
9	Cyclone outer drum rubber seal	CY-100-912	1	
	Universal Boot Seal - BSI or equivalent			
10	M10 Stainless steel Nyloc nut	CY-100-929	8	
11	M10 x 25 Hex head stainless steel screw	CY-100-928	8	

DRAWING APPROVAL

APPROVED: _____ DATE: _____
 SIGNATURE: _____

RELEASED FOR FABRICATION

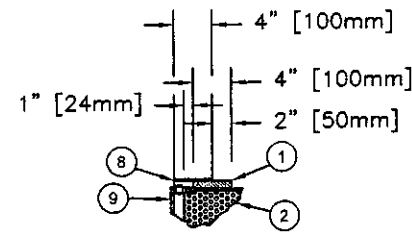

PWTech
PROCESS WASTEWATER TECHNOLOGIES

Process Wastewater Technologies
 105 Springbrook Place
 Cary, North Carolina 27518
 Tel. 919.858.8887
 Fax 919.858.8983
 www.PWTech.us

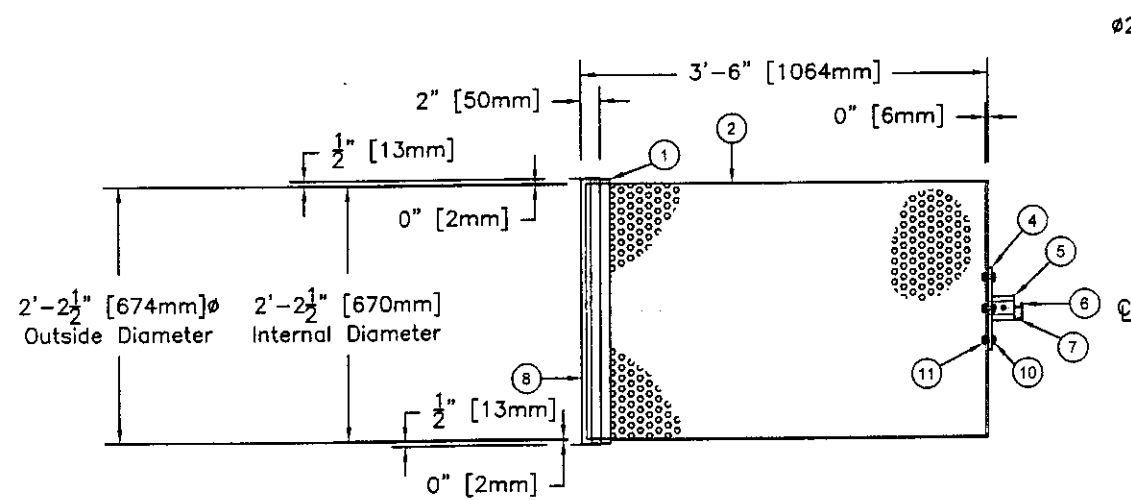
DRAWING TITLE:
 PROFILE OF CYCLONE
 CYCLONE OUTER DRUM ASSEMBLY

PROJECT TITLE:
 WYLESBORO CREEK AND
 WYLESBORO PARK, PA

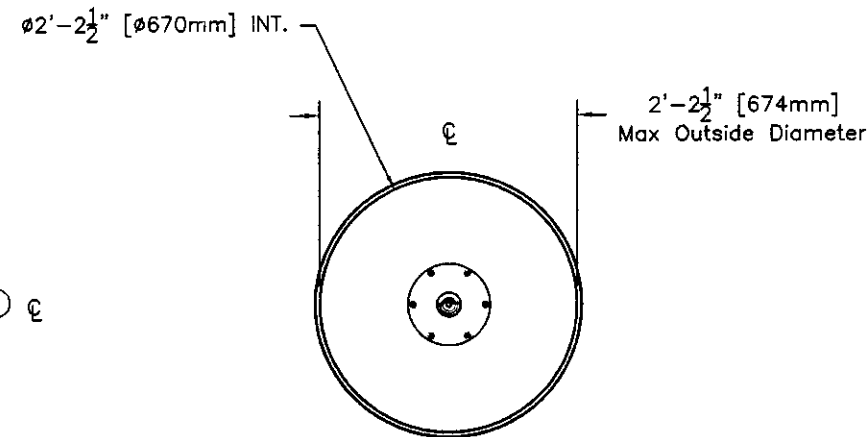
DRAWN BY:	DATE:	SCALE:	SHEET SIZE:
DRAWING NO:	SHEET:	REV:	
	OF		



DRUM SEAL DETAIL



ELEVATION OUTER DRUM ASSEMBLY



END ELEVATION OUTER DRUM