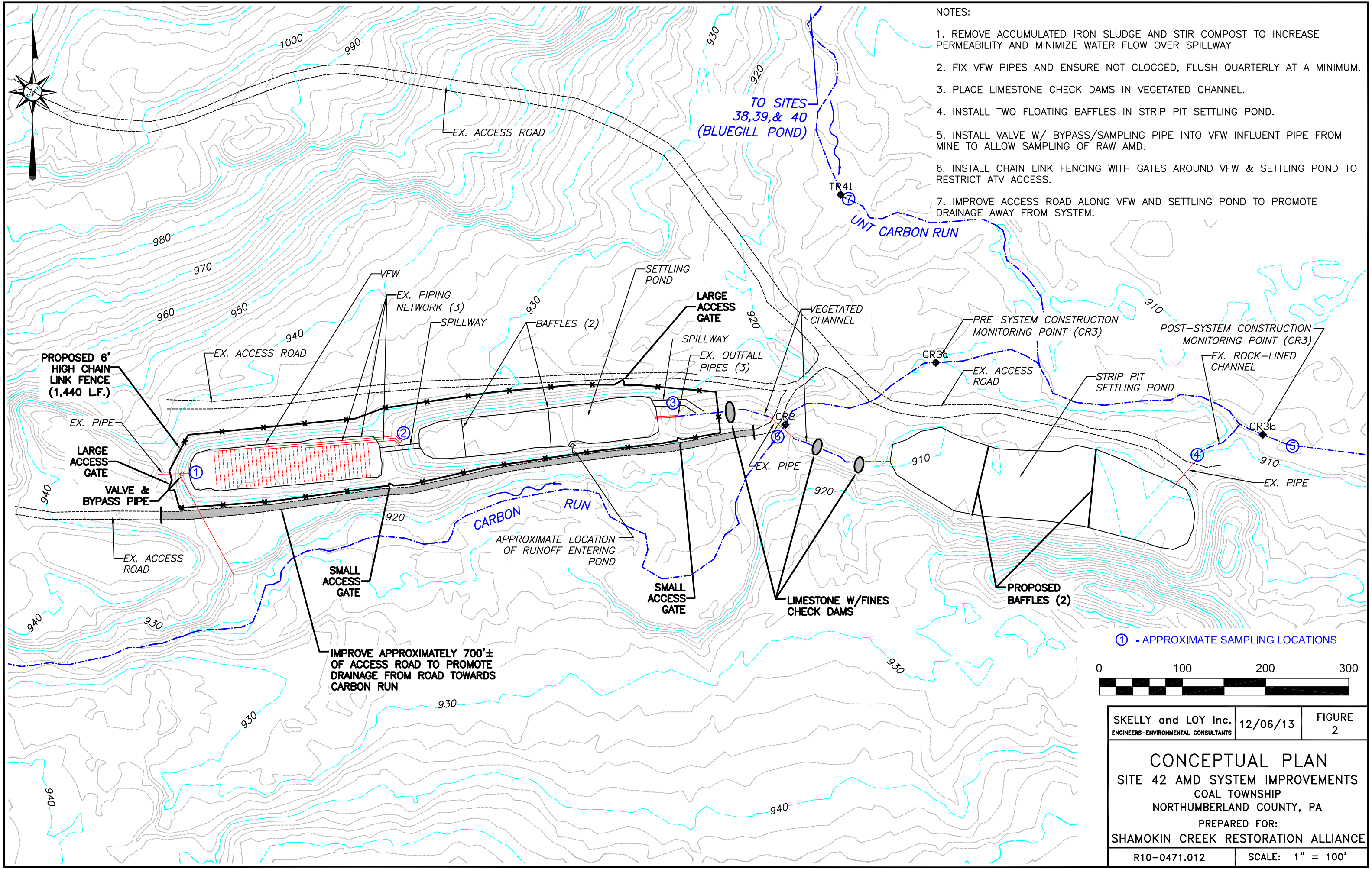


NOTE: HISTORIC SAMPLING POINTS WERE USED BY PA DEP, BUCKNELL UNIVERSITY, & USGS FROM 1997 TO 2011 ON CARBON RUN.

LOCATION MAP
SCALE: 1"=2,000'

SOURCE: U.S.G.S 7.5' QUADRANGLES - TREVERTON AND SHAMOKIN, PENNSYLVANIA

| | | |
|---|--------------------|-------------|
| SKELLY and LOY Inc. ENGINEERS-ENVIRONMENTAL CONSULTANTS | 12/16/13 | FIGURE 1 |
| LOCATION MAP SITE 42 AMD REMEDIATION PROJECT COAL TOWNSHIP NORTHUMBERLAND COUNTY, PA PREPARED FOR: SHAMOKIN CREEK RESTORATION ALLIANCE | | |
| R10-0471.012 | SCALE: 1" = 2,000' | |



NOTES:

1. REMOVE ACCUMULATED IRON SLUDGE AND STIR COMPOST TO INCREASE PERMEABILITY AND MINIMIZE WATER FLOW OVER SPILLWAY.
2. FIX VFW PIPES AND ENSURE NOT CLOGGED, FLUSH QUARTERLY AT A MINIMUM.
3. PLACE LIMESTONE CHECK DAMS IN VEGETATED CHANNEL.
4. INSTALL TWO FLOATING BAFFLES IN STRIP PIT SETTLING POND.
5. INSTALL VALVE W/ BYPASS/SAMPLING PIPE INTO VFW INFLUENT PIPE FROM MINE TO ALLOW SAMPLING OF RAW AMD.
6. INSTALL CHAIN LINK FENCING WITH GATES AROUND VFW & SETTLING POND TO RESTRICT ATV ACCESS.
7. IMPROVE ACCESS ROAD ALONG VFW AND SETTLING POND TO PROMOTE DRAINAGE AWAY FROM SYSTEM.

① - APPROXIMATE SAMPLING LOCATIONS



| | | |
|--|------------------|-------------|
| SKELLY and LOY Inc. <small>ENGINEERS-ENVIRONMENTAL CONSULTANTS</small> | 12/06/13 | FIGURE 2 |
| CONCEPTUAL PLAN SITE 42 AMD SYSTEM IMPROVEMENTS COAL TOWNSHIP NORTHUMBERLAND COUNTY, PA PREPARED FOR: SHAMOKIN CREEK RESTORATION ALLIANCE | | |
| R10-0471.012 | SCALE: 1" = 100' | |