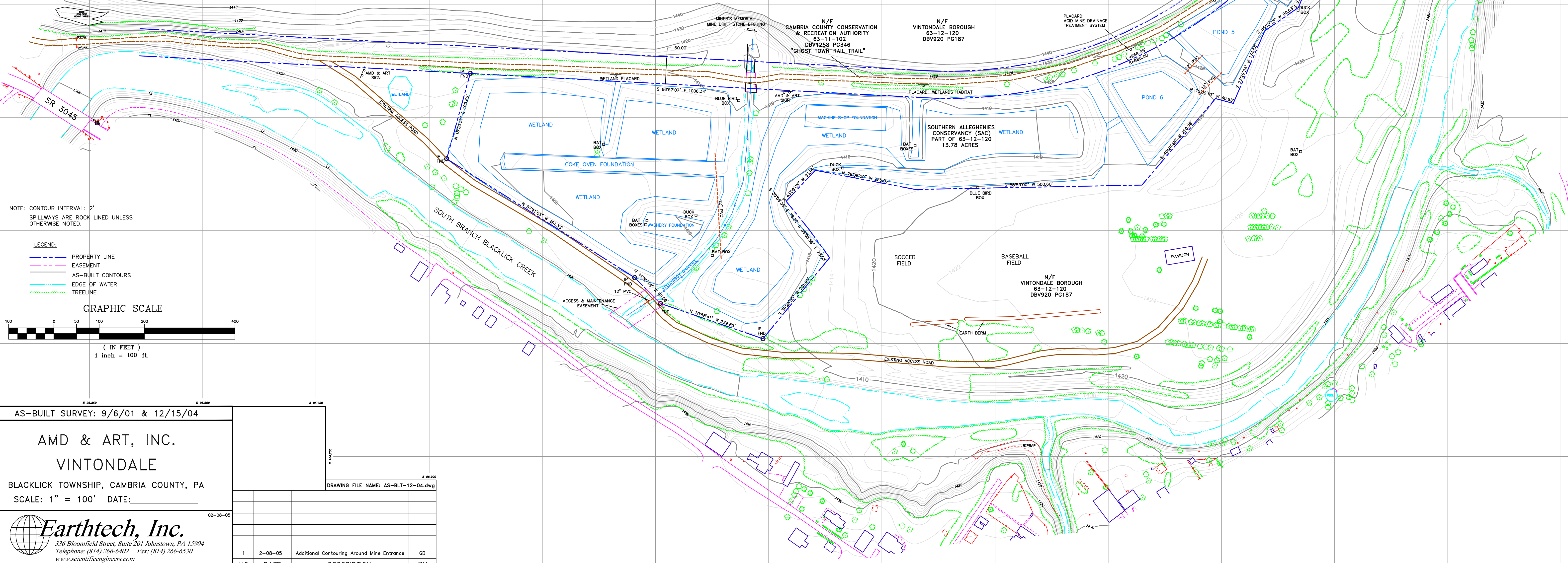
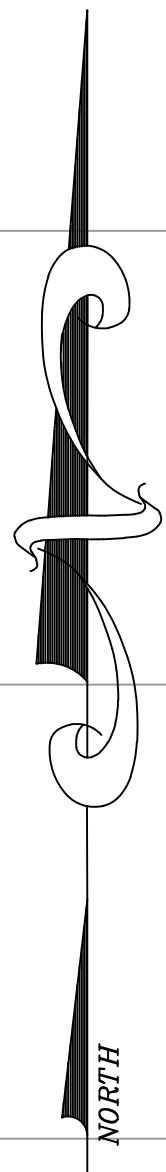
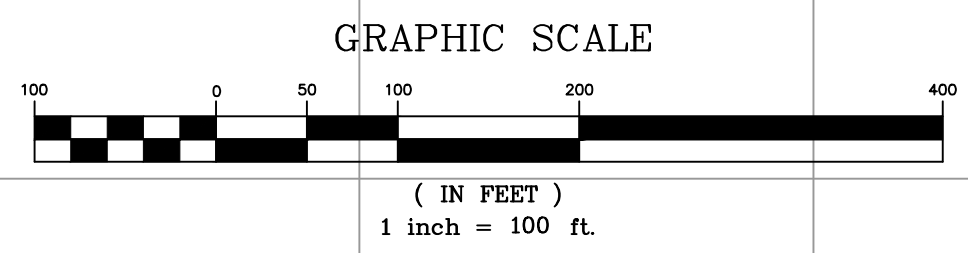


- NOTES:
1. BOUNDARY SHOWN ACCORDING TO "PLAN OF SURVEY FOR AMD & ART, INC." BY DANIEL E. MOORE SURVEYING & CONSULTING, FEBRUARY 2002.
 2. CONTOURING NORTH OF TRAIL AND AROUND VINTON COLLIERIES MINE NO. 6 ENTRANCE OBTAINED FROM A COMBINATION OF SURVEY DATA AND USGS INFORMATION.



NOTE: CONTOUR INTERVAL: 2'
SPILLWAYS ARE ROCK LINED UNLESS OTHERWISE NOTED.

- LEGEND:
- PROPERTY LINE
 - EASEMENT
 - AS-BUILT CONTOURS
 - EDGE OF WATER
 - TREELINE



AS-BUILT SURVEY: 9/6/01 & 12/15/04

AMD & ART, INC.

VINTONDALE

BLACKLICK TOWNSHIP, CAMBRIA COUNTY, PA

SCALE: 1" = 100' DATE: _____

Earthtech, Inc.

336 Bloomfield Street, Suite 201 Johnstown, PA 15904
Telephone: (814) 266-6402 Fax: (814) 266-6530
www.scientificengineers.com

DRAWING FILE NAME: AS-BLT-12-04.dwg

NO.	DATE	DESCRIPTION	BY
1	2-08-05	Additional Contouring Around Mine Entrance	GB