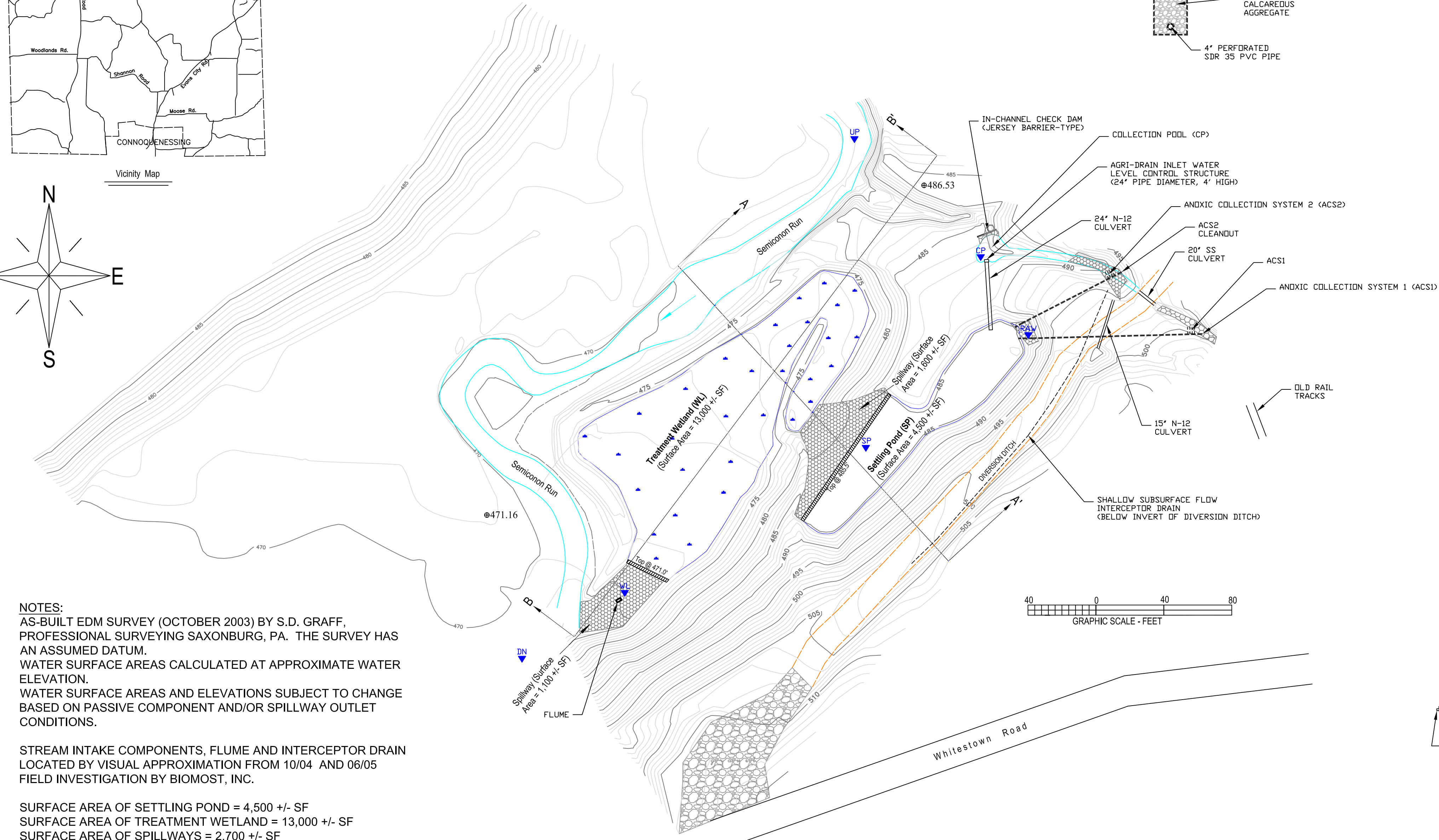


PLAN VIEW

Scale: 1" = 40'

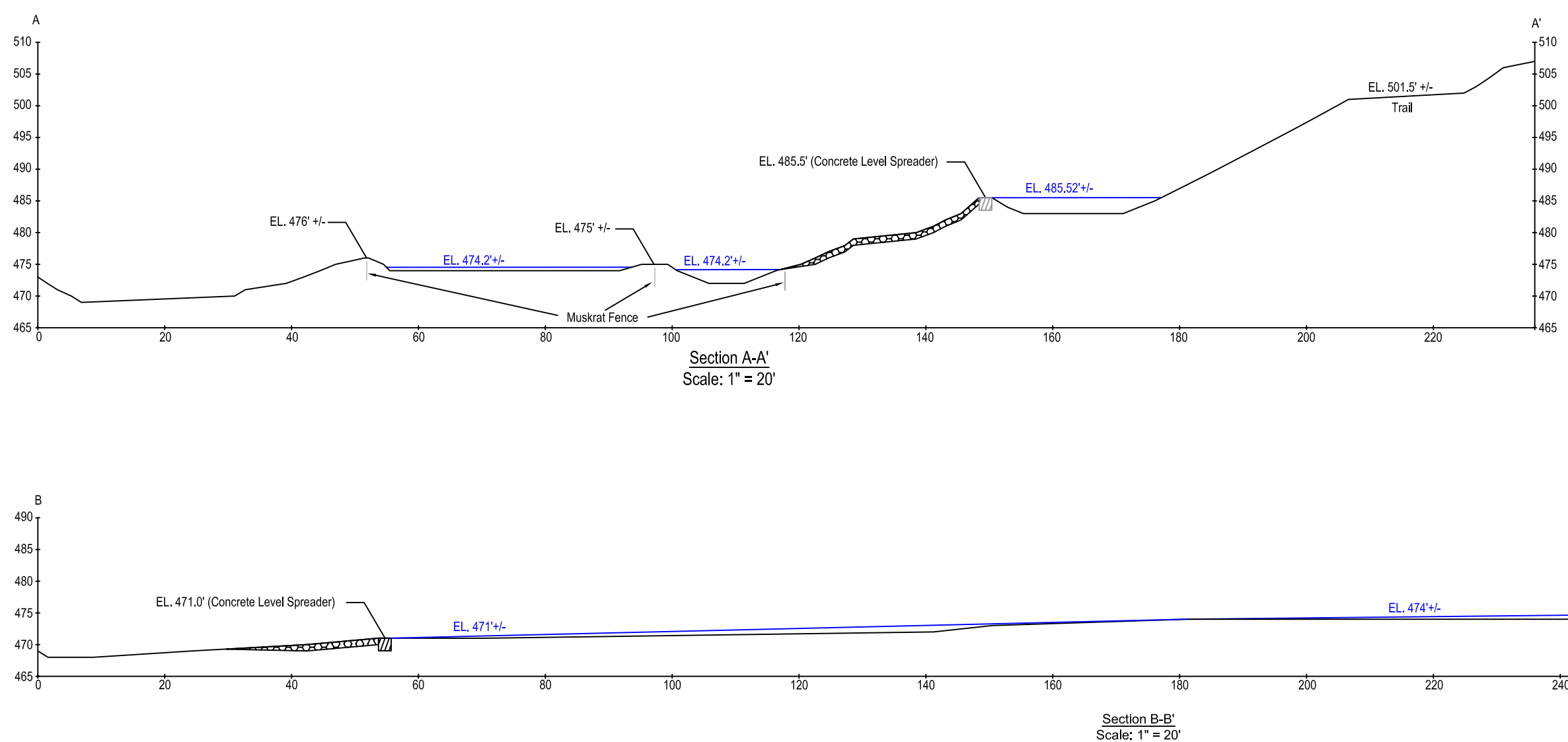


NOTES:
 AS-BUILT EDM SURVEY (OCTOBER 2003) BY S.D. GRAFF, PROFESSIONAL SURVEYING SAXONBURG, PA. THE SURVEY HAS AN ASSUMED DATUM.
 WATER SURFACE AREAS CALCULATED AT APPROXIMATE WATER ELEVATION.
 WATER SURFACE AREAS AND ELEVATIONS SUBJECT TO CHANGE BASED ON PASSIVE COMPONENT AND/OR SPILLWAY OUTLET CONDITIONS.

STREAM INTAKE COMPONENTS, FLUME AND INTERCEPTOR DRAIN LOCATED BY VISUAL APPROXIMATION FROM 10/04 AND 06/05 FIELD INVESTIGATION BY BIOMOST, INC.

SURFACE AREA OF SETTLING POND = 4,500 +/- SF
 SURFACE AREA OF TREATMENT WETLAND = 13,000 +/- SF
 SURFACE AREA OF SPILLWAYS = 2,700 +/- SF
 TOTAL SURFACE AREA = 20,200 +/- SF

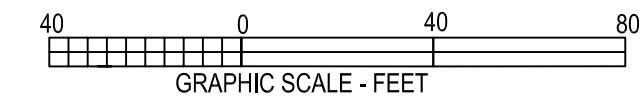
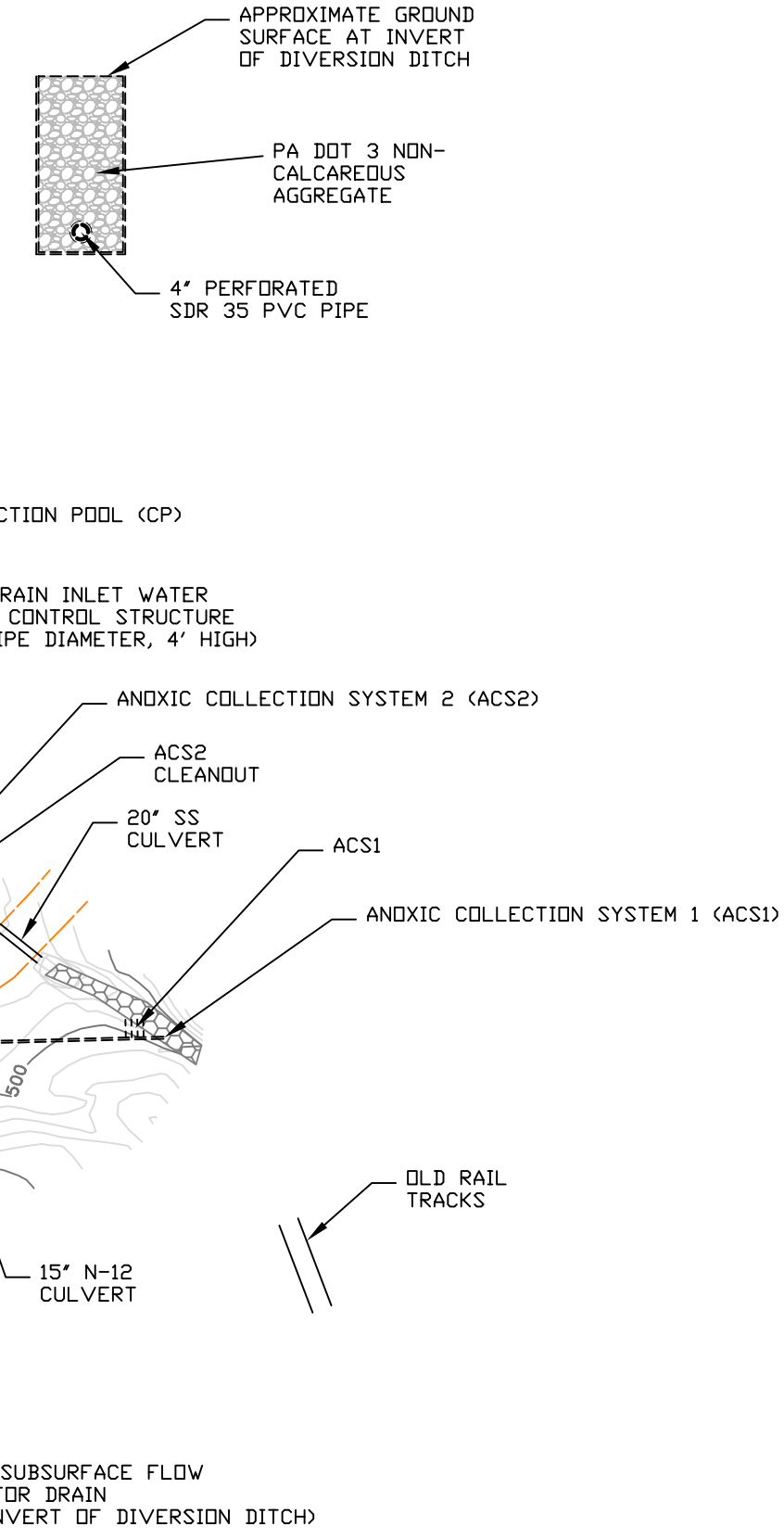
CROSS SECTIONS



CROSS SECTION NOTES:
 WATER ELEVATIONS APPROXIMATE.
 MICROTOPOGRAPHIC RELIEF INCORPORATED INTO TREATMENT WETLAND FOR INCREASED FUNCTION.
 36" CHAIN LINK FENCE BUILT INTO BERMS TO PREVENT MUSKRAT DAMAGE.
 DEPTH OF R-4 RIP-RAP IS APPROXIMATELY 1'.

INTERCEPTOR DRAIN DETAILS

Scale: 1" = 4'



Species Planted in Semicomon Passive Treatment Wetland

Scientific Name	Common Name	Indicator Status	Stratum
<i>Asclepias incarnata</i>	Milkweed, Swamp	OBL	H
<i>Carex crinita</i>	Sedge, Fringed	OBL	H
<i>Carex stricta</i>	Sedge, Tussock	OBL	H
<i>Carex spp.</i>	Sedge	---	H
<i>Eleocharis spp.</i>	Spikerush	---	H
<i>Juncus effusus</i>	Rush, Soft	FACW+	H
<i>Leersia oryzoides</i>	Cutgrass, Rice	OBL	H
<i>Ludwigia palustris</i>	Water-purslane	OBL	H
<i>Polygonum sagittatum</i>	Teardrop, Arrowleaf	OBL	H
<i>Polygonum spp.</i>	Smartweed	---	H
<i>Pontederia cordata</i>	Pickering Weed	OBL	H
<i>Scirpus validus</i>	Bulrush, Soft-stemmed	OBL	H
<i>Sparganium americanum</i>	Burreed, American	OBL	H
<i>Symlocarpus foetidus</i>	Skunk-cabbage	OBL	S
<i>Cephalanthus occidentalis</i>	Buttonbush	FACW+	S
<i>Cornus stolonifera</i>	Dogwood, Red-osier	OBL	S
<i>Salix sericea</i>	Willow, Silky	FAC	T
<i>Acer rubrum</i>	Maple, Red	FAC	T

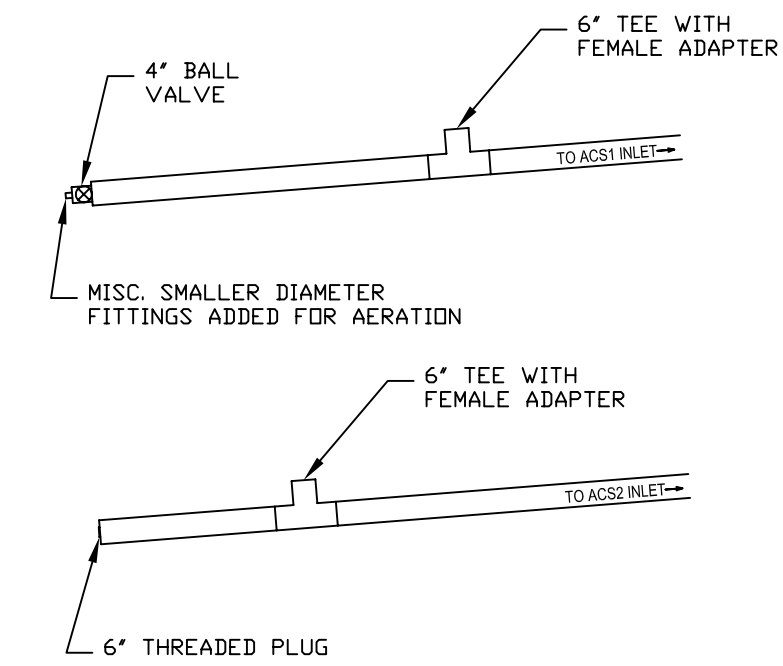
Legend

- Contour - Index
- Contour - Intermediate
- Stream
- Edge of Water
- Anoxic Collection System (buried)
- 486.53 Survey Bench Mark w/elevation
- Trail
- Paved/Improved Road
- As Built Cross Section
- Rip Rap (R-4)
- Rip Rap (R-5)
- Weir (Concrete Level Spreader 2 x 2 x 6)
- Gravel Parking Area
- Treatment Wetland Area
- Water Monitoring Location

ANOXIC COLLECTION SYSTEM DETAILS

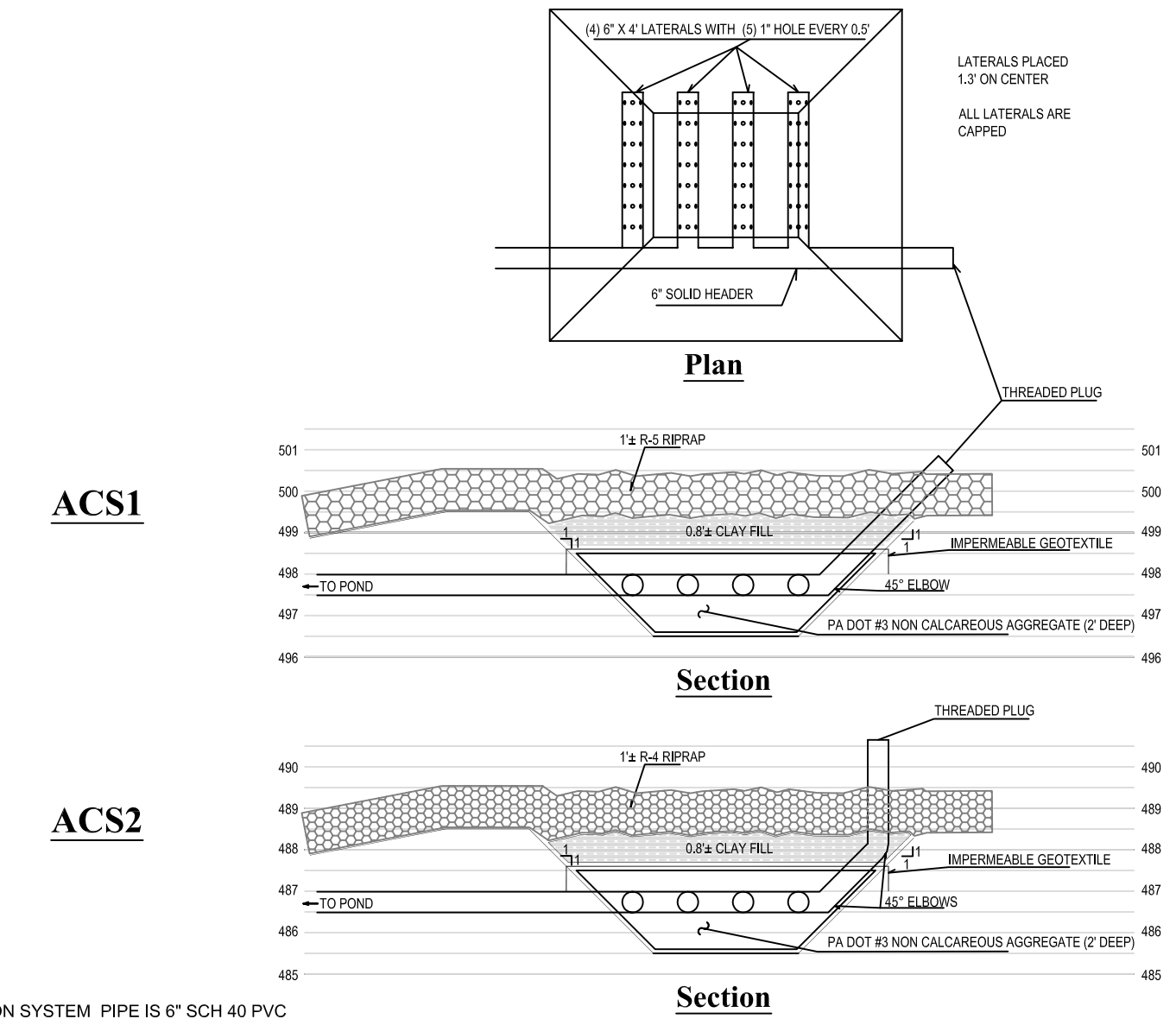
Scale: 1" = 4'

OUTLET DETAILS



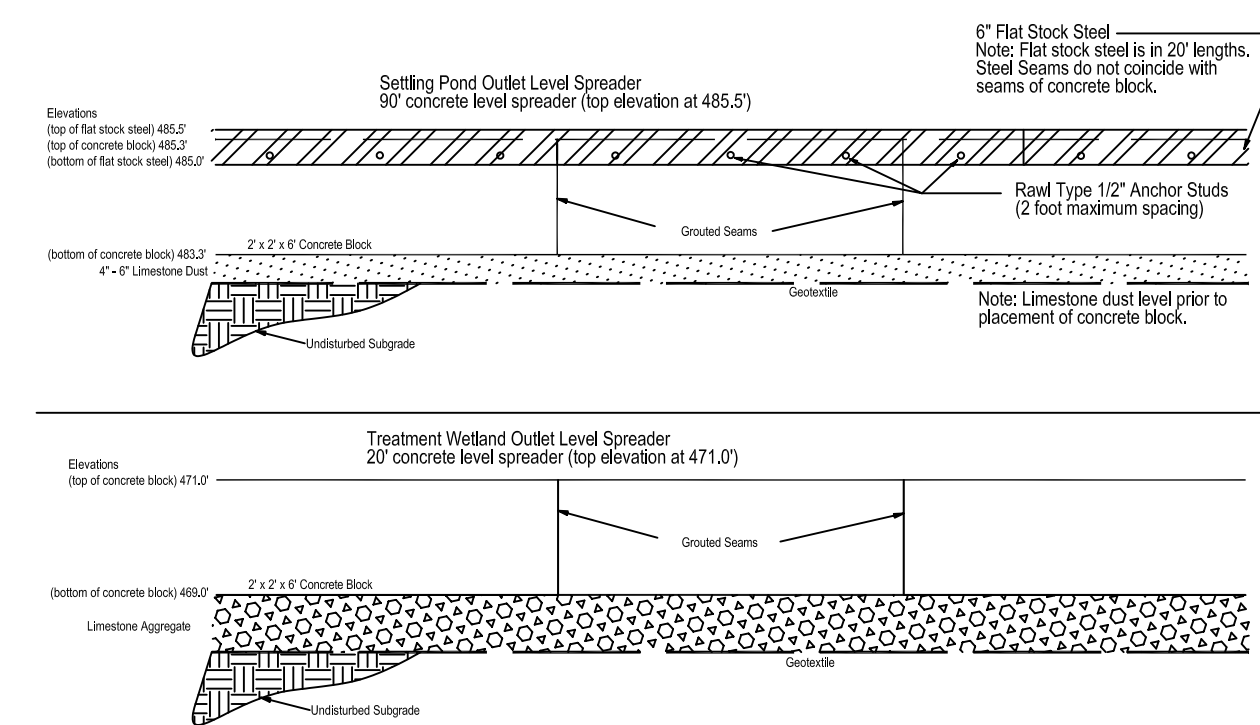
NOTE: ALL ANOXIC COLLECTION SYSTEM PIPE IS 6" SCH 40 PVC

INLET DETAILS



LEVEL SPREADER DETAILS

Not to Scale



As-Built Plans -- Semicomon Run Passive Treatment System

Camp Lutheryn

PADEP Growing Greener Project

Connoquenessing Township,
Butler County, PA

Beran Environmental Services, Inc., Boyers, PA
& BioMost, Inc., Cranberry Twp., PA

Scale: As Shown
Date: 6/2005

As-built EDM survey (October 2003) by
S.D. Graff, Professional Surveying
Saxonburg, PA