

COMMONWEALTH OF PENNSYLVANIA
DEPARTMENT OF ENVIRONMENTAL PROTECTION

ACID MINE DRAINAGE ABATEMENT PROJECT
NUMINE (WHITE LAKE)
COWANSHANNOCK TOWNSHIP

ARMSTRONG COUNTY

CONTRACT NO. AMD 03(0743)101.1

DRAWING INDEX

TITLE	DWG. NO.
TITLE SHEET	1 of 7
LOCATION & VICINITY MAPS, NOTES	2 of 7
GRADING PLAN	3 of 7
SITE PLAN	4 of 7
CROSS SECTIONS	5 of 7
PIPE LAYOUT AND DETAILS	6 of 7
DETAILS	7 of 7

"AS-BUILT"
01/25/05

F:\RCN\18(6693)\Loop Run\g2logoblack.gif

PARTIAL FUNDING FOR THIS PROJECT PROVIDED BY THE
ENVIRONMENTAL STEWARDSHIP AND WATERSHED PROTECTION ACT.

MARK SCHWEIKER

GOVERNOR

DAVID E. HESS

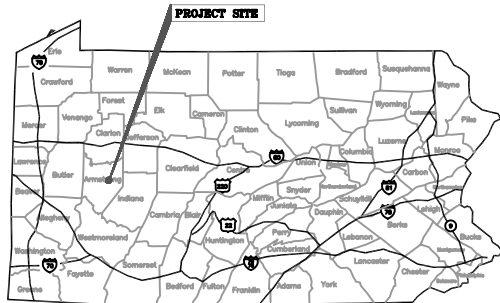
SECRETARY

DEPARTMENT OF ENVIRONMENTAL PROTECTION

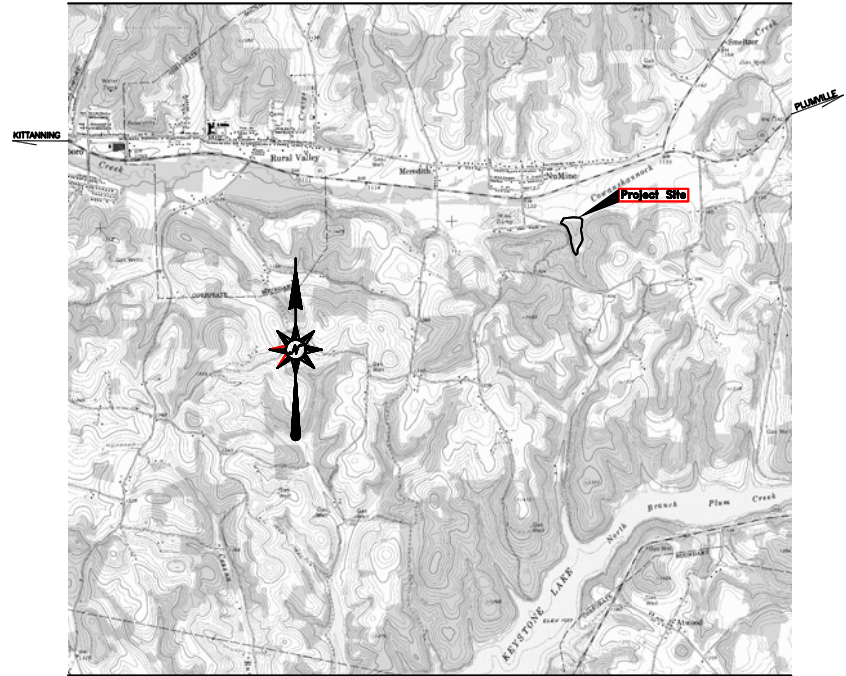
Prepared By
DEPARTMENT OF ENVIRONMENTAL PROTECTION
BUREAU OF ABANDONED MINE RECLAMATION
CAMBRIA OFFICE

ERIC E. CAVAZZA
DESIGN SECTION CHIEF – CAMBRIA OFFICE
DEPARTMENT OF ENVIRONMENTAL PROTECTION

DATE



VICINITY MAP
Scale: None



LOCATION MAP

SCALE: 1" = 2000'

General Notes

1. All areas disturbed outside the limit of grading must be restored to as good as or better than pre-construction conditions.
2. Access roads to the project site and roads within the project site shall be restored to their pre-construction condition or better upon project completion.
3. Property lines were taken from Armstrong County Tax Assessment maps and are approximate.
4. Areas within the limit of grading where 1 ft. contour intervals are not completely shown shall be graded uniformly between 5 ft. contour intervals.
5. Contractor's work area and limit of grading are approximate. Minor deviations may be permitted subject to the approval of the Department's Representative.
6. Minor adjustments in grade may be made by the Department's Representative.

Under Public Utilities Act No. 187

The Contractor shall comply with Act of December 10, 1974 (Public Law 852, No. 287), As Amended, which defines the procedures for notification to Public Utilities prior to excavation, drilling or demolition work using power equipment or explosives.

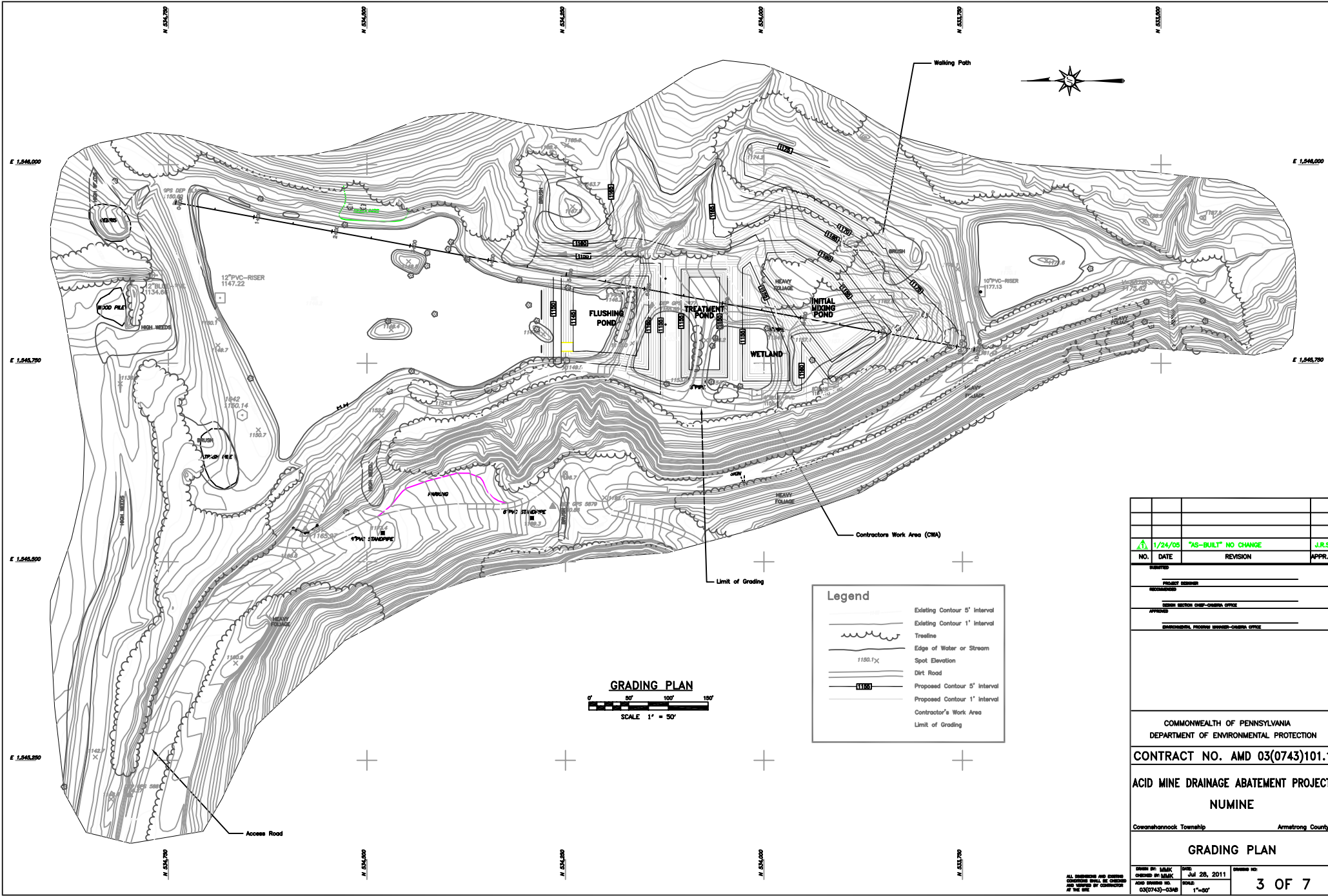
"Pa. One Call System" Serial Number: 0501190
"Pa. One Call System" Toll Free Number 1-800-242-1776

There are no known public utilities located within or adjacent to the project area.

NO.	DATE	REVISION	APPR.
1	2/14/05	"AS-BUILT" NO CHANGES	J.R.S

DESIGNED: _____
PROJECT ENGINEER: _____
RECORDED: _____
STATE RECORDS CHIEF - CHIEF OFFICE
APPROVED: _____
SUPERVISOR, PERMITS DIVISION - CHIEF OFFICE

COMMONWEALTH OF PENNSYLVANIA
DEPARTMENT OF ENVIRONMENTAL PROTECTION
CONTRACT NO. AMD 03(0743)101.1
ACID MINE DRAINAGE ABATEMENT PROJECT
NUMINE
Cowanshannock Township Armstrong County
Location & Vicinity Maps, Notes



GRADING PLAN
 0' 50' 100' 150'
 SCALE 1" = 50'

Legend	
	Existing Contour 5' Interval
	Existing Contour 1' Interval
	Treeline
	Edge of Water or Stream
	Spot Elevation
	Dirt Road
	Proposed Contour 5' Interval
	Proposed Contour 1' Interval
	Contractor's Work Area
	Limit of Grading

NO.	DATE	REVISION	APPR.
1	1/24/05	"AS-BUILT" NO CHANGE	J.R.S.

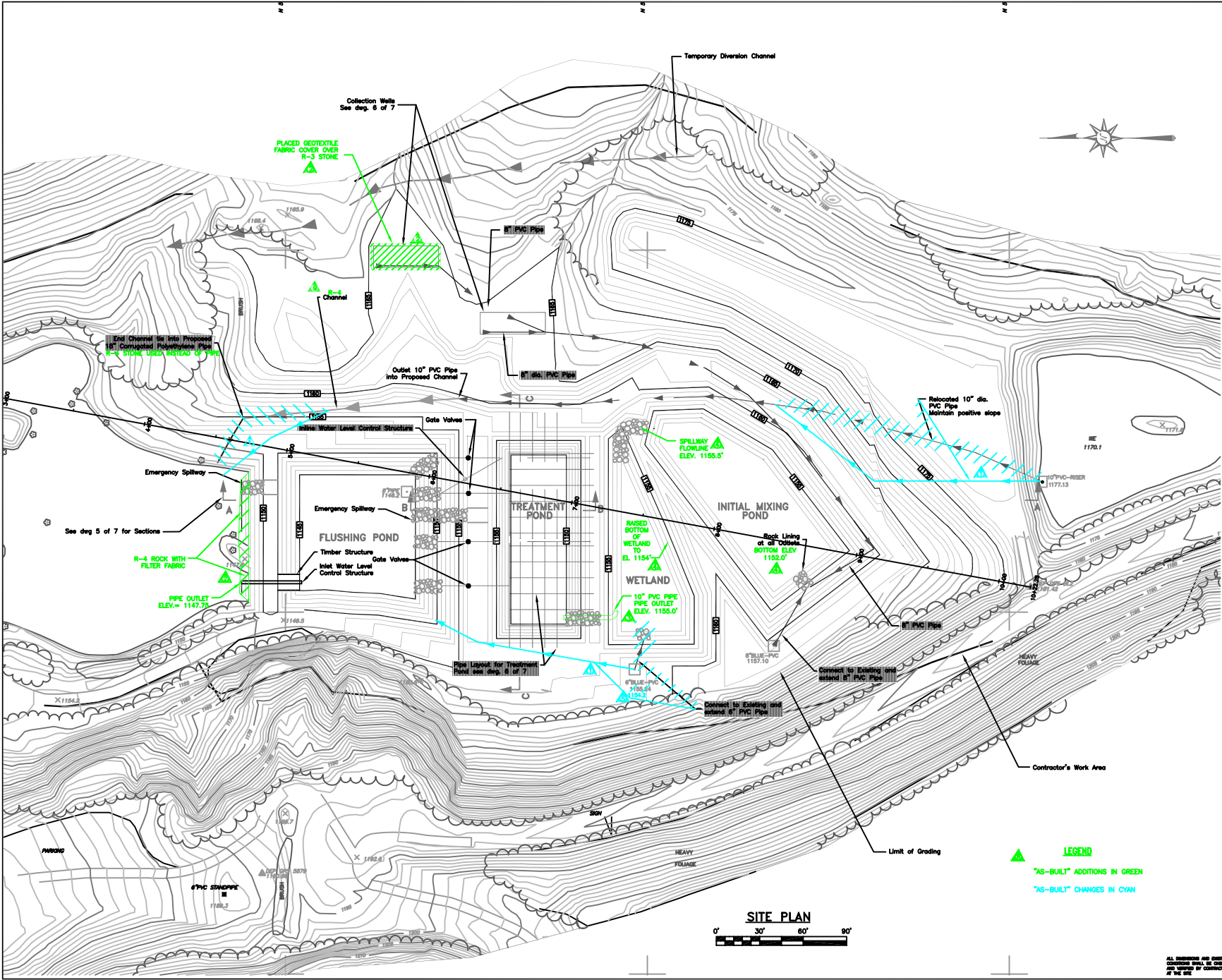
PROJECT NUMBER: _____
 REVISIONS: _____
 DESIGN SECTION CHIEF-CAMDEN OFFICE: _____
 APPROVED: _____
 ENVIRONMENTAL PROTECTION DEPARTMENT

COMMONWEALTH OF PENNSYLVANIA
 DEPARTMENT OF ENVIRONMENTAL PROTECTION
CONTRACT NO. AMD 03(0743)101.1
ACID MINE DRAINAGE ABATEMENT PROJECT
NUMINE
 Cowanshannock Township Armstrong County

GRADING PLAN

DESIGNED BY: MLK/CK	DATE: Jul 26, 2011	DRAWN BY: MLK/CK	SCALE: 1"=50'
CHECKED BY: MLK/CK		PROJECT NO: 03(0743)-03AB	
APPROVED BY: MLK/CK		SHEET NO: 3 OF 7	

ALL DIMENSIONS AND SPACING SHOWN ON THIS PLAN SHALL BE CHECKED AND APPROVED BY THE CONTRACTOR AT THE SITE.



Legend

- Existing Contour 5' Interval
- Existing Contour 1' Interval
- Treshline
- Edge of Water or Stream
- Spot Elevation
- Dirt Road
- Proposed Contour 5' Interval
- Proposed Contour 1' Interval
- Contractor's Work Area
- Limit of Grading
- Proposed Pipe
- Proposed Channel
- Proposed Temporary Diversion Channel
- Rock Lining
- Gate Valve

NO.	DATE	REVISION	APPR.
1/24/05		"AS-BUILT" ADDED STONE SIZE	J.R.S.
1/24/05		"AS-BUILT" ADDED LEGEND	J.R.S.
			J.R.S.
1/24/05		"AS-BUILT" REVISED ELEVATION	J.R.S.
1/24/05		"AS-BUILT" ADDED ELEVATIONS AND ELEVATION NOTES	J.R.S.
1/21/05		"AS-BUILT" ADDED 10" PVC PIPE	J.R.S.
1/21/05		"AS-BUILT" ADDED R4 ROCK WITH FILTER FABRIC GEOTEXTILE COVER	J.R.S.
1/21/05		"AS-BUILT" RELOCATED PIPE	J.R.S.

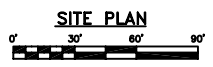
NO.	DATE	REVISION	APPR.

COMMONWEALTH OF PENNSYLVANIA
 DEPARTMENT OF ENVIRONMENTAL PROTECTION
CONTRACT NO. AMD 03(0743)101.1
ACID MINE DRAINAGE ABATEMENT PROJECT
NUMINE
 Cowanshannock Township Armstrong County

SITE PLAN

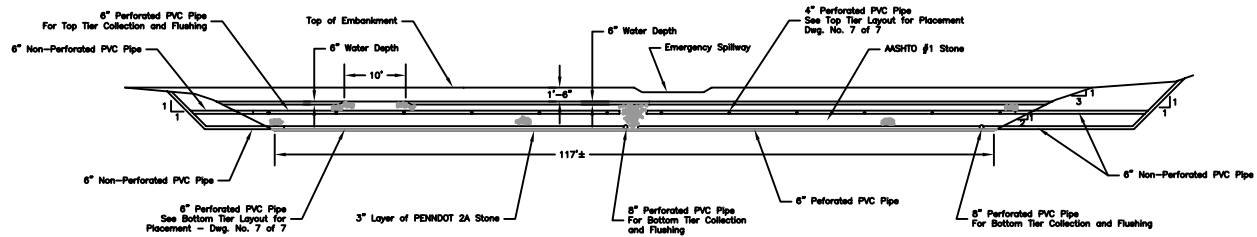
OWNER BY: ML&C CHECKED BY: ML&C DATE: Jul 26, 2011
 DRAWN BY: JRS DATE: 03/07/05-04B SCALE: 1"=30'

4 OF 7



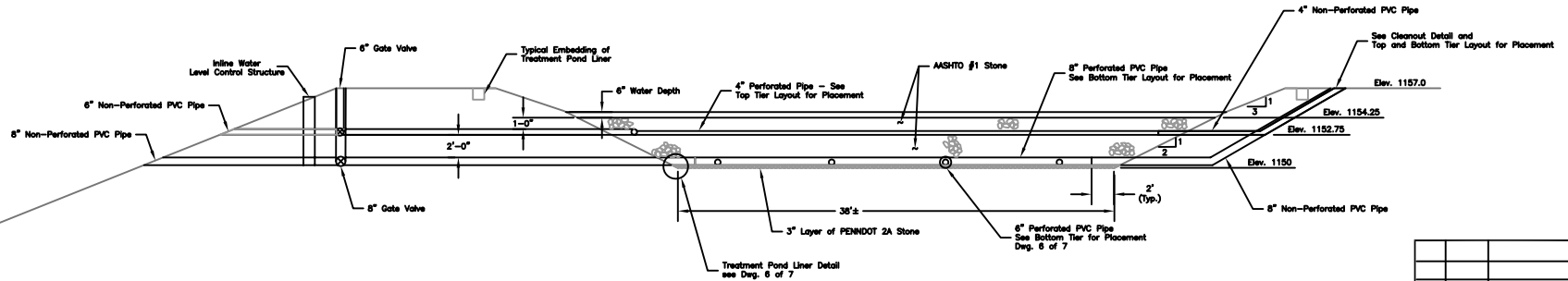
ALL DIMENSIONS AND SPACING
 SHOWN UNLESS OTHERWISE NOTED
 AND SHOWN BY CONTRACTOR
 AT HIS RISK

NOTE:
Non-Perforated PVC Pipe is to Connect
with Perforated PVC Pipe 2' within Treatment
Pond.



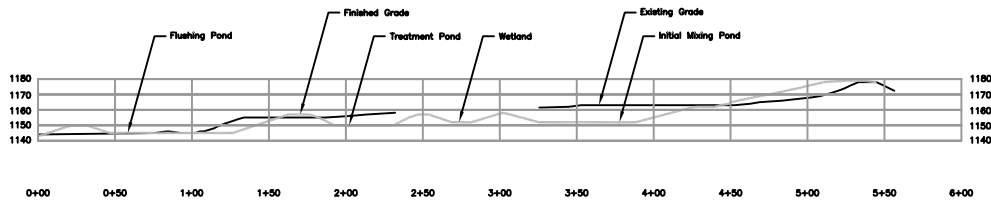
TREATMENT POND SECTION C-C

Scale: 1" = 10'-0"



TREATMENT POND SECTION B-B

Scale: 1" = 5'-0"



SECTION A-A

Scale 1" = 40'-0"

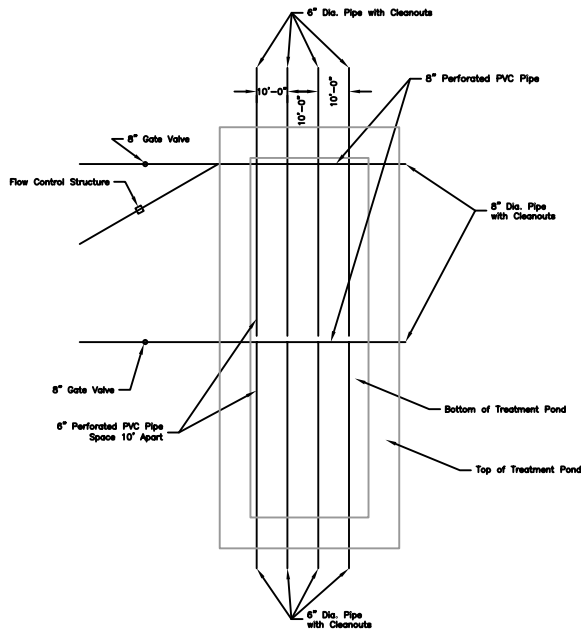
NO.	DATE	REVISION	APPR.
1	1/24/05	"AS-BUILT" NO CHANGE	J.R.S.

SUBMITTED _____
 PROJECT REVIEWER _____
 RECORDED _____
 LOCAL SECTION CHIEF-CAMERA OFFICE _____
 APPROVED _____
 DISTRICT/REGIONAL PROJECT MANAGER-CAMERA OFFICE _____

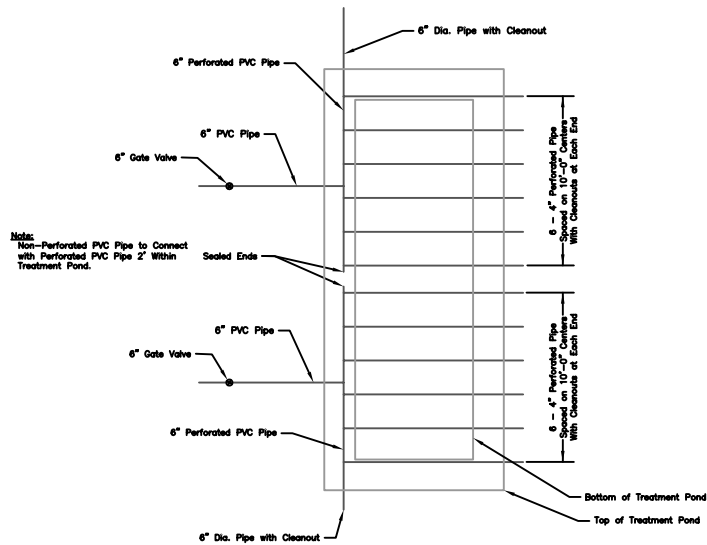
COMMONWEALTH OF PENNSYLVANIA
 DEPARTMENT OF ENVIRONMENTAL PROTECTION
CONTRACT NO. AMD 03(0743)101.1
ACID MINE DRAINAGE ABATEMENT PROJECT
NUMINE
 Cowanshannock Township Armstrong County

CROSS SECTIONS

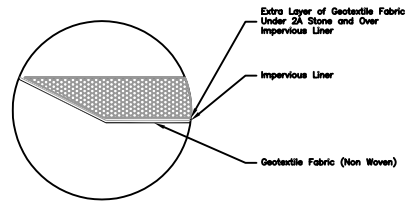
DRAWN BY: J.R.S./A.M.C. CHECKED BY: J.M.C. DATE: JUL 27, 2011 PROJECT NO.: AMD 03(0743)-054B AS SHOWN	SHEET NO.: 5 OF 7
---	-----------------------------



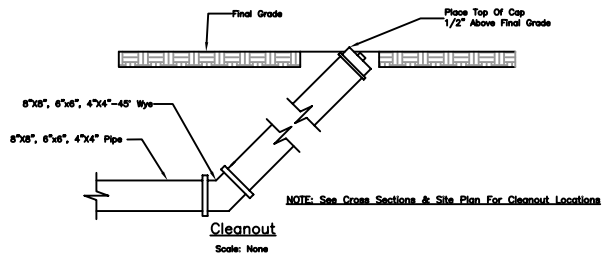
TREATMENT POND BOTTOM TIER PIPE LAYOUT
scale: 1" = 20'



TREATMENT POND TOP TIER PIPE LAYOUT
scale: 1" = 20'

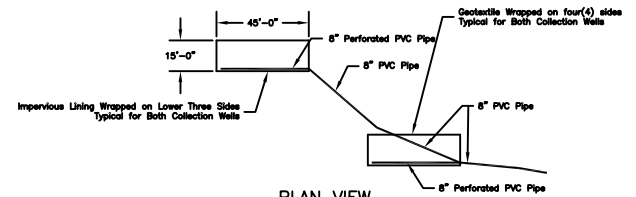


TREATMENT POND LINER DETAIL
No Scale

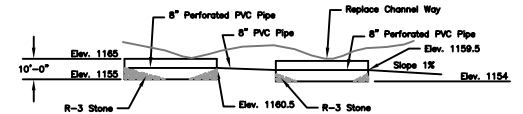


Cleanout
Scale: None

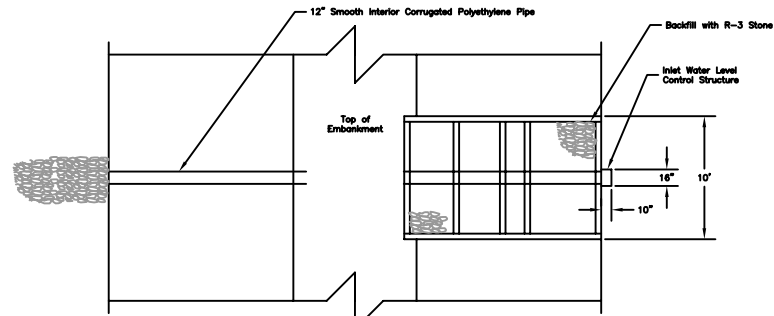
NOTE: See Cross Sections & Site Plan For Cleanout Locations



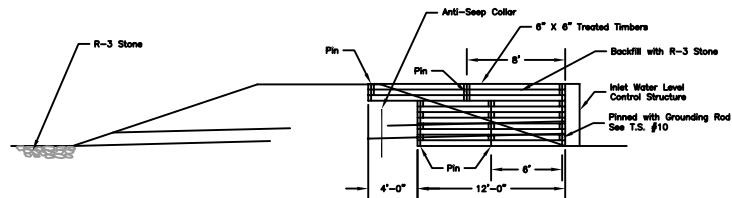
PLAN VIEW
Scale: 1" = 30'



FRONT VIEW
Scale: 1" = 30'
COLLECTION WELLS



FRONT VIEW
Scale: 1" = 5'-0"



SIDE VIEW
Scale: 1" = 5'-0"
TIMBER STRUCTURE

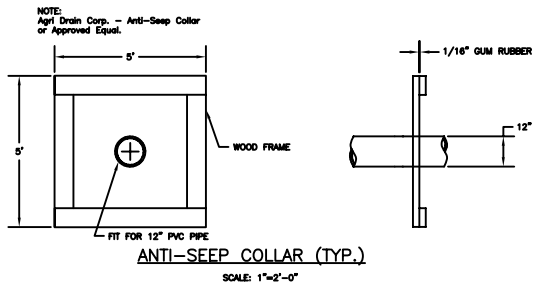
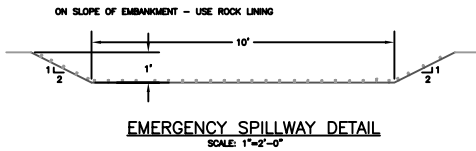
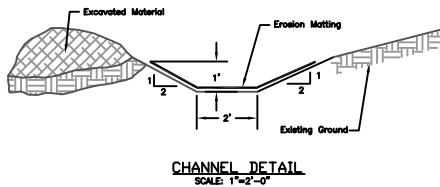
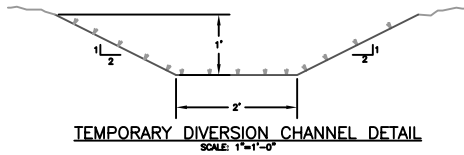
NO.	DATE	REVISION	APPR.
1	1/24/05	"AS-BUILT" NO CHANGE	J.R.S.

DESIGNED	RECORDED	APPROVED
DESIGNED	RECORDED	APPROVED
DESIGNED	RECORDED	APPROVED

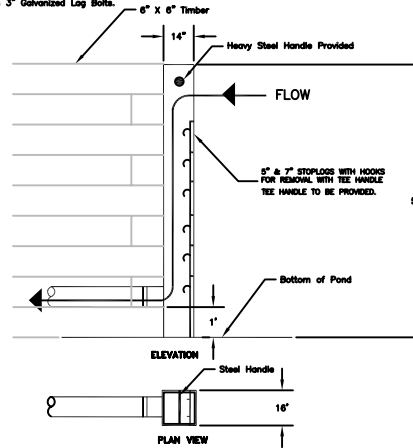
COMMONWEALTH OF PENNSYLVANIA
DEPARTMENT OF ENVIRONMENTAL PROTECTION
CONTRACT NO. AMD 03(0743)101.1
ACID MINE DRAINAGE ABATEMENT PROJECT
NUMINE
Cowanshannock Township Armstrong County

Pipe Layout and Detail

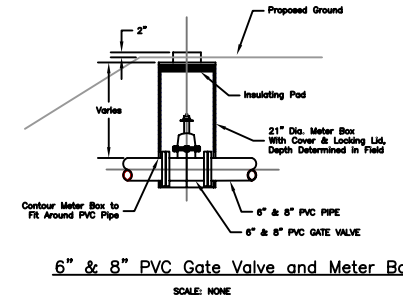
DRAWN BY: J.R.S./A.M.C.	DATE: Jul 27, 2011	REVISED NO.
CHECKED BY: J.R.S.	DATE: Jul 27, 2011	
SCALE: AS SHOWN	SCALE: AS SHOWN	



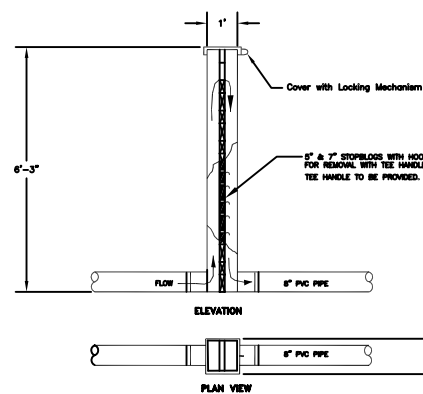
NOTE:
1. Structure Mounted to Timbers with 3" Galvanized Lag Bolts.



Agri Drain - 12" PVC INLET WATER LEVEL CONTROL STRUCTURE or Approved Equal.



NOTES:
1. Contractor Shall Exercise Careful Bedding Technique during the installation of the In-Line Water Level Control Structure.
2. Contractor Shall Install the Structure According to Manufacturer's Recommendations.



Agri Drain - 6" PVC INLINE WATER LEVEL CONTROL STRUCTURE or Approved Equal.

NO.	DATE	REVISION	APPR.
1	1/24/05	"AS-BUILT" NO CHANGE	J.R.S.
SUBMITTED			
PROJECT ENGINEER			
RECORDED			
SEWER SECTION CHIEF - CHESTER OFFICE			
APPROVED			
SEWER ENGINEER - CHESTER OFFICE			
COMMONWEALTH OF PENNSYLVANIA DEPARTMENT OF ENVIRONMENTAL PROTECTION			
CONTRACT NO. AMD 03(0743)101.1			
ACID MINE DRAINAGE ABATEMENT PROJECT NUMINE			
Cowanshannock Township Armstrong County			
Details			
DATE OF L&L MEETING	03/14/02	DRAWING NO.	
ISSUED BY L&L		SCALE:	
ALL DIMENSIONS AND SPACING		AS SHOWN	
UNLESS OTHERWISE SPECIFIED, ALL DIMENSIONS ARE TO FACE UNLESS OTHERWISE NOTED.			