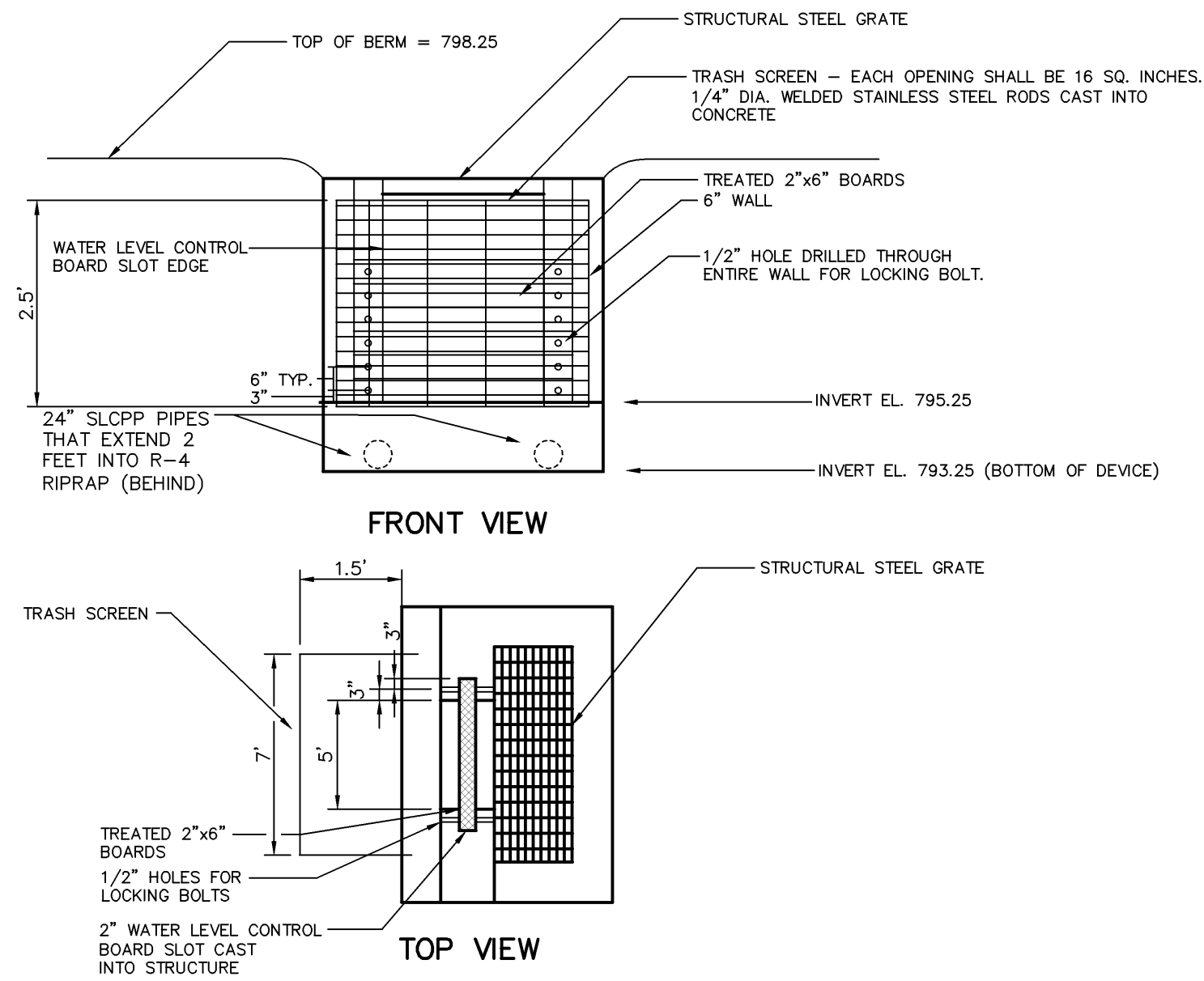


**OXIC LIMESTONE DRAIN**  
SCALE 1" = 10'

- NOTES:**
1. ALL CONCRETE SHALL BE COATED WITH COAL TAR EPOXY COATING.
  2. CONTRACTOR SHALL WORK WITH REPRESENTATIVES FROM USGS TO INSTALL FOUR (4) MONITORING PORTS, TO BE PROVIDED BY USGS.



NOTE: ALL CONCRETE SHALL BE COATED WITH COAL TAR EPOXY COATING  
**OXIC LIMESTONE DRAIN INFLOW STRUCTURE**  
NOT TO SCALE

| NO. | DATE     | REVISION                         |
|-----|----------|----------------------------------|
| 2   | 12/16/04 | REVISED PROPOSED SITE ELEVATIONS |
| 1   | 7/8/04   | REVISED PLAN SCHEME              |

| FOR RETIEW ASSOCIATES BY: |                      |
|---------------------------|----------------------|
| FELDBOOK NO.              | DATA COLLECTOR       |
| CHKD BY:                  | CEB                  |
| DESIGN BY:                | TK/MUS               |
| MANAGER:                  | CLAYTON BUBECK, P.E. |
| DESIGN BY:                | CHKD BY:             |
| CEB/PGB                   |                      |
| DRAWING REFERENCE:        |                      |
| XREFS:                    |                      |

CLIENT  
**SCHUYLKILL HEADWATERS ASSOCIATION, INC.**  
P.O. BOX 138  
POTTSVILLE, PA 17901  
(570) 385-2122

SCALE  
NO SCALE

**RETIEW ASSOCIATES, INC.**  
3920 Columbus Ave., Lancaster, PA 17603  
Phone (717) 394-3721 • Fax (717) 394-1063  
Email: [retiew@retiew.com](mailto:retiew@retiew.com)  
Website: [www.retiew.com](http://www.retiew.com)  
Baltimore, PA • Comp Hill, PA • Pottsville, PA • York, PA  
Engineers • Planners • Scientists • Landscape Architects • Surveyors

ABANDONED MINE DRAINAGE REMEDIATION PROJECT FOR THE OTTO DISCHARGE  
**SCHUYLKILL HEADWATERS ASSOCIATION, INC.**  
SITE DETAILS  
REILLY TOWNSHIP  
SCHUYLKILL COUNTY, PA

DATE: MAY 22, 2003  
SHEET NO. 7 OF 7  
DWG. No. 02-04234-001