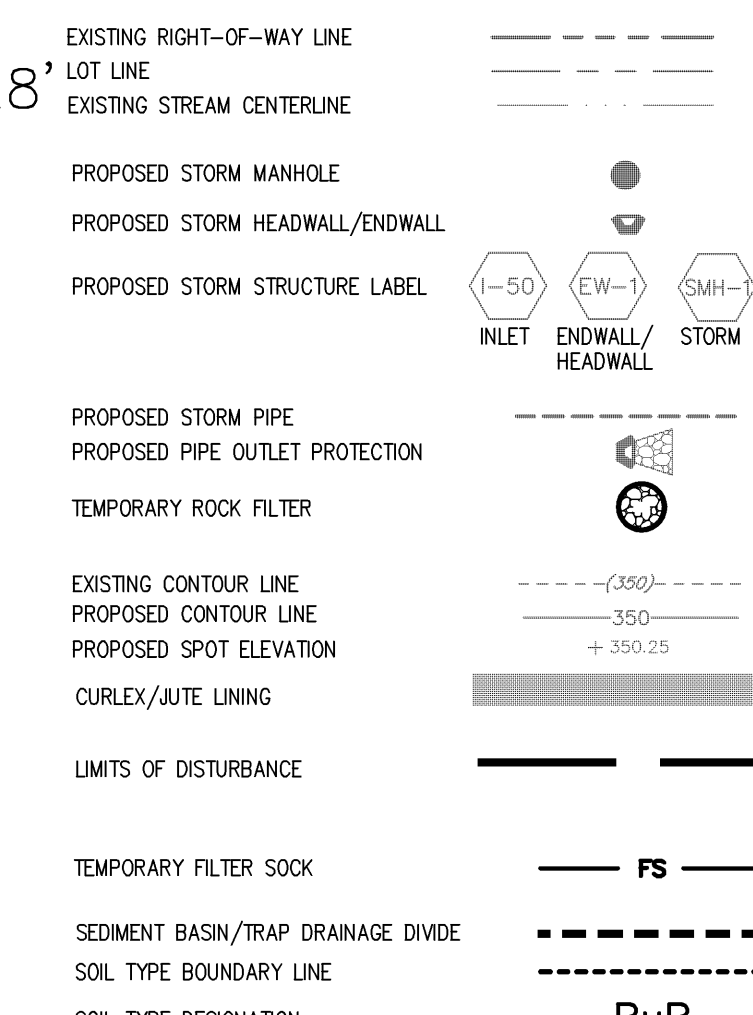


NOTE:
BENCHMARK— TRAVERSE POINT #8
LOCATED APPROXIMATELY 12' WEST
OF THE 30" C.I.P. ELEVATION: 790.28'
DATUM: NAVD 88

LEGEND



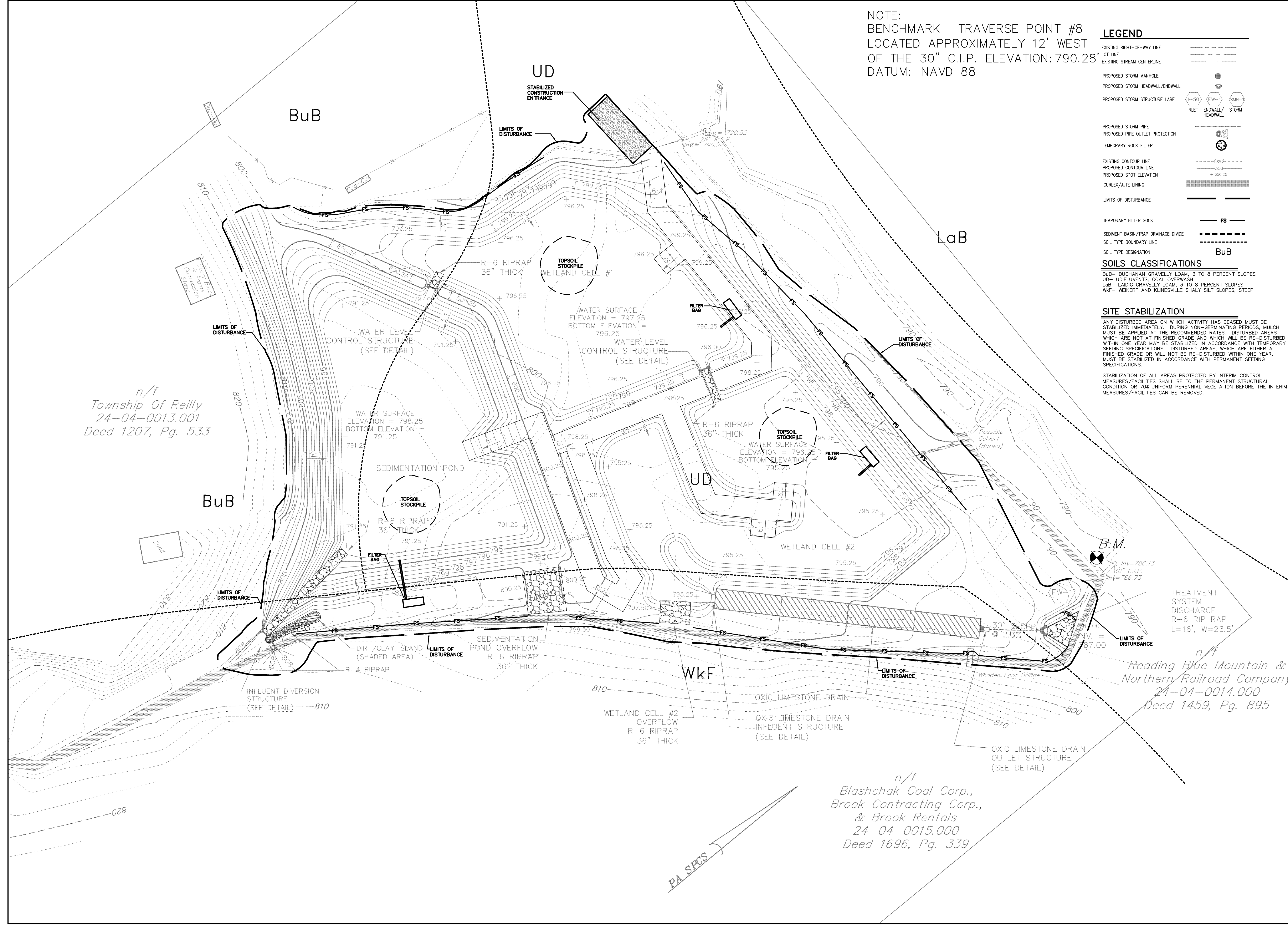
SOILS CLASSIFICATIONS

BuB— BUCHANAN GRAVELLY LOAM, 3 TO 8 PERCENT SLOPES
UD— UDIFLUENTS, COAL OVERWASH
LaB— LAIDIG GRAVELLY LOAM, 3 TO 8 PERCENT SLOPES
WkF— WEIKERT AND KLINESVILLE SHALY SILT SLOPES, STEEP

SITE STABILIZATION

ANY DISTURBED AREA ON WHICH ACTIVITY HAS CEASED MUST BE STABILIZED IMMEDIATELY. DURING NON-GERMINATING PERIODS, MULCH MUST BE APPLIED AT THE RECOMMENDED RATES. DISTURBED AREAS WHICH ARE NOT AT FINISHED GRADE AND WHICH WILL BE RE-DISTURBED WITHIN ONE YEAR MAY BE STABILIZED IN ACCORDANCE WITH TEMPORARY SEEDING SPECIFICATIONS. DISTURBED AREAS, WHICH ARE EITHER AT FINISHED GRADE OR WILL NOT BE RE-DISTURBED WITHIN ONE YEAR, MUST BE STABILIZED IN ACCORDANCE WITH PERMANENT SEEDING SPECIFICATIONS.

STABILIZATION OF ALL AREAS PROTECTED BY INTERIM CONTROL MEASURES/FACILITIES SHALL BE TO THE PERMANENT STRUCTURAL CONDITION OR 70% UNIFORM PERENNIAL VEGETATION BEFORE THE INTERIM MEASURES/FACILITIES CAN BE REMOVED.



n/f
Township Of Reilly
24-04-0013.001
Deed 1207, Pg. 533

n/f
Blashchak Coal Corp.,
Brook Contracting Corp.,
& Brook Rentals
24-04-0015.000
Deed 1696, Pg. 339

n/f
Reading Blue Mountain &
Northern Railroad Company
24-04-0014.000
Deed 1459, Pg. 895

NO.	DATE	REVISION
2	12/16/04	REVISED PROPOSED SITE ELEVATIONS
1	7/6/04	REVISED PLAN SCHEME

FOR REVIEW ASSOCIATES BY:

SURV. CHIEF	FIELDBOOK NO.	CLIENT
R. ORNER	DATA COLLECTOR	SCHUYLKILL HEADWATERS ASSOCIATION, INC.
TRK/MUS	CHGO BY:	P.O. BOX 138
CEB/P/BD	DESIGN BY:	POTTSVILLE, PA 17901
		(570) 385-2122

REVIEW ASSOCIATES, INC.
3920 Columbus Ave., Leesport, PA 17603
Phone (717) 394-3721 • Fax (717) 394-1063
Email: review@review.com
Website: www.review.com
Baltimore, PA • Camp Hill, PA • Pottsville, PA • York, PA
Engineers • Planners • Scientists • Landscape Architects • Surveyors

ABANDONED MINE DRAINAGE REMEDIATION PROJECT FOR THE OTTO DISCHARGE
SCHUYLKILL HEADWATERS ASSOCIATION, INC.
EROSION CONTROL PLAN
REILLY TOWNSHIP SCHUYLKILL COUNTY, PA

DATE: MAY 22, 2003
SHEET NO. 4 OF 7
DWG. NO. 02-04234-001

BIDDING DOCUMENTS